

SURVEY & REMONUMENTATION

JAN 19 1999

SECTION

LAND CORNER RECORDATION CERTIFICATE
Filing Requirement of Act 74, Mich. P.A. 1970

For corners in

Iron	Located In:	Corner Code #
(County)		
1. Public Land Survey	T <u>42N</u> R <u>33W</u>	<u>B-3</u>
	T _____ R _____	_____
	T _____ R _____	_____
	T _____ R _____	_____
2. Property Controlling in Section	S _____ T _____ R _____	_____
	S _____ T _____ R _____	_____
3. Miscellaneous Property in Sec.	S _____ T _____ R _____	_____
	S _____ T _____ R _____	_____

IRON COUNTY
MICHIGAN
RECEIVED FOR RECORD

98 DEC 28 AM 11:15
L.C. Records: L. 7, P. 259

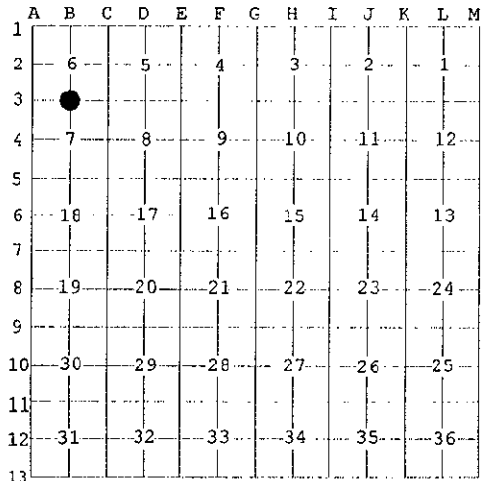
Richard Stebbins
Register of Deeds Stamp & File Number

4. Lot No. _____, Recorded Plat _____
 5. Private Claims _____

Quarter Corner Sections 6 and 7, T42N, R33W

I, Gary L. Pisoni, in a field survey on Nov. 5, 1998 do hereby state that under requirements of P.A. 74, Michigan P.A. of 1970, the corner points mentioned in lines 1 and 2 above were in conformance with regulations and rules therefore as required in the current manual of survey instructions of the United States Department of the Interior, Bureau of Land Management or by a decree of a Court of Law and /or that the corner points mentioned in lines 3, 4 and 5 above were in conformance with the rules of the Michigan Board of Land Surveyors or by a Decree of a Court of Law; established, re-established, monumented, recovered, found as expressed below:

NOTE: Not more than 2 corners, all in the same town and range, may be recorded on this certificate.



A. Description of original monument and accessories and/or subsequent restoration:

Original corner established in October, 1851 by Guy H. Carleton, U.S. Deputy Surveyor.
 Original Corner; Wood Post
 Original Bearing Trees:

Sugar	14"	N 65° W	26 links (17.16 feet)
Fir	9"	S 66° E	30 links (19.80 feet)

PEER GROUP APPROVED
Don H. ... 12-18-98
 COUNTY REPRESENTATIVE

B. Description of corner evidence found and/or method applied in restoring or reestablishing corner:

No evidence of original B.T.s found. Found a 5/8" x 30" rebar pin marking corner position which I previously set on 9/9/81 by single proportionate measurement on line from the Northeast corner of Section 7 to the Northwest corner of Section 7.
 I accept the rebar pin as the best available evidence for restoring the corner position.
 Corner record research on file with County Representative.

C. Description of monument for corner and accessories established to perpetuate locating the position of the corner:

At the corner position, set a 3" diameter aluminum cap over the top of the existing rebar pin and stamped as follows:
 Iron County Remonumentation, T42N, R33W, 1/4, S-6, S-7, 1998, RLS 27457 from which I established the following new blazed and scribed bearing trees: (All measurements taken to a nail in side of tree)

Ironwood	5"	N 77° W	13.59 feet
Basswood	8"	N 30° E	30.27 feet
Sugar Maple	8"	S 14° E	19.75 feet
Sugar Maple	8"	S 57° W	18.35 feet
Steel sign post		East	0.75 feet

98-33
 Signed by Gary L. Pisoni Date 12-21-98
 Surveyor's Michigan License No. 27457

FORM APPROVED BY MICHIGAN STATE BOARD OF PROFESSIONAL SURVEYORS, JAN. 28, 1971
 REVISIONS: MAY 14, 1975; JAN. 1983; OCT., 1995



L. 7 P. 259