

SURVEY & REMONUMENTATION

APR 27 1995

COMMISSION

LAND CORNER RECORDATION CERTIFICATE
Filing Requirement of Act 74, Mich. P.A. 1970

IRON COUNTY
MICHIGAN
RECEIVED FOR RECORD

For corners in
IRON

(County)

Located In:

Corner Code #

1. Public Land Survey		T	43N	R	33W	D-13
		T	42N	R	33W	D-1
		T		R		
		T		R		
2. Property Controlling in Section	S	T	R	R	R	
	S	T	R	R	R	
3. Miscellaneous Property in Sec.	S	T	R	R	R	
	S	T	R	R	R	

95 FEB 10 PM 3: 27
L.C. RECORDS L. 6 P. 350

Eileen J. Lewis
REGISTER OF DEEDS

Register of Deeds Stamp & File Number

4. Lot No. _____, Recorded Plat _____
5. Private Claims _____

I, Alan K. Pierce, in a field survey on December, 19 94, do hereby certify that under requirements of P.A. 74, Michigan P.A. of 1970, the corner points mentioned in lines 1 and 2 above were in conformance with regulations and rules therefore as required in the current manual of survey instructions of the United States Department of the Interior, Bureau of Land Management or by a decree of a Court of Law and/or that the corner points mentioned in lines 3, 4 and 5 above were in conformance with the rules of the Michigan Board of Land Surveyors or by a Decree of a Court of Law; established, re-established, monumented, re-monumented, recovered, found as expressed below:

NOTE: Not more than 4 corners, all in the same town and range, may be recorded on this certificate.

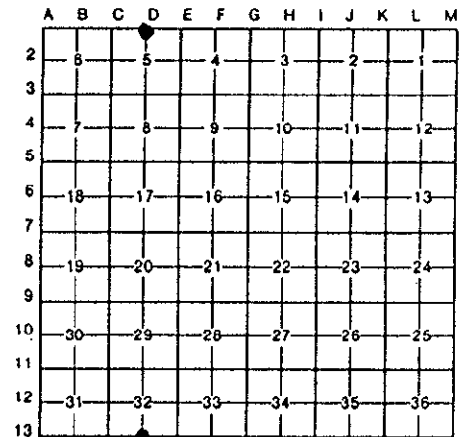
A. Description of original monument and accessories and/or subsequent restoration:

D-1/13 Quarter Corner to Sections 5 and 32, T42/43N-R33W.

1846: Austin Burt set a Birch post during establishment of the Township line T42/43N and established the following witnesses: 34" Hemlock N45°E 5L; 6" Fir N73°W 48L.

B. Description of corner evidence found and/or method applied in restoring or reestablishing corner:

D-1/13; 1994, E C I: No original evidence found. Found a location tag by Longyear Realty on an uprooted Spruce dated Feb. 1967 in corner area. The following measurement was taken to original G.L.O. terrain call: "Top of ridge-W" 2508' G.L.O. - 2505' E C I. Corner position established equidistant on line between found C-1/13 and found E-1/13 and is accepted as a careful and faithful reestablishment of the position of the original corner. The corner lies about 5' North of old East-West fence line and about 17' East of old fence line to the South. Set Iron County Remonumentation monument, a 2" diameter x 30" long aluminum pipe with 3" diameter aluminum cap stamped to identify the corner, about 0.1' above grade, and established witnesses. Distance West to C-1/13 2638.22', distance East to E-1/13 2638.22'.



PEER GROUP APPROVED

Iron Surveyors Assn
COUNTY REPRESENTATIVE
AP 1-25-95

C. Description of monument for corner and accessories established to perpetuate locating the position of the corner:

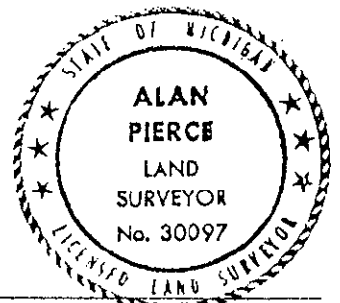
Bearing trees are face, nail, and butt blazed and painted yellow. Distances are measured from a 16d double head nail with an orange plastic washer stamped "E C I - 30097" in the side of the bearing tree. Face blaze is scribed with an "X". Butt blaze is scribed "BT". Metal sign/tag placed above face blaze.

D-1/13: Set Iron County Remonumentation monument witnessed by:

5" Maple N27°E 14.97'
24" Maple S80°W 36.36'

4" Maple S23°E 10.67'
6" Maple N72°W 39.58'

Sign Post N00°E 0.73'



Signed by *Alan K. Pierce*

Date 1-12-95

Surveyor's Michigan License No. 30097