

SURVEY & REMONUMENTATION

JAN 19 1999

SECTION

**LAND CORNER RECORDATION CERTIFICATE
Filing Requirement of Act 74, Mich. P.A. 1970**

For corners in

<u>Iron</u> (County)	Located In:	Corner Code #
1. Public Land Survey	T <u>42N</u> R <u>33W</u>	<u>D-5</u>
	T _____ R _____	_____
	T _____ R _____	_____
	T _____ R _____	_____
2. Property Controlling in Section	S _____ T _____ R _____	_____
	S _____ T _____ R _____	_____
3. Miscellaneous Property in Sec.	S _____ T _____ R _____	_____
	S _____ T _____ R _____	_____

IRON COUNTY
MICHIGAN
RECEIVED FOR RECORD

98 DEC 28 AM 11:16

L.C. Records: L. 7, P. 265

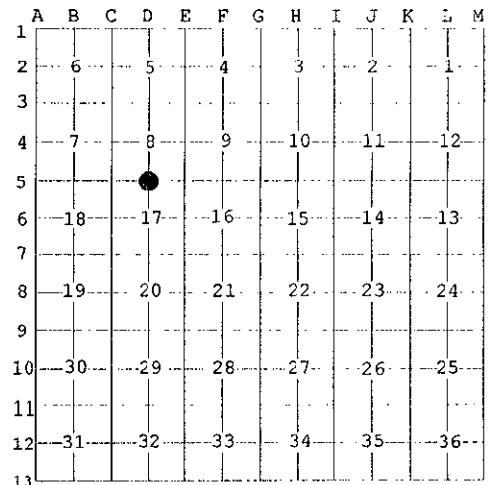
Gilbert Stiles

Register of Deeds Stamp & File Number

4. Lot No. _____, Recorded Plat _____
5. Private Claims _____

Quarter Corner Sections 8 and 17, T42N, R33W

I, Gary L. Pisoni, in a field survey on Nov. 5, 1998 do hereby state that under requirements of P.A. 74, Michigan P.A. of 1970, the corner points mentioned in lines 1 and 2 above were in conformance with regulations and rules therefore as required in the current manual of survey instructions of the United States Department of the Interior, Bureau of Land Management or by a decree of a Court of Law and /or that the corner points mentioned in lines 3, 4 and 5 above were in conformance with the rules of the Michigan Board of Land Surveyors or by a Decree of a Court of Law; established, re-established, monumented, recovered, found as expressed below:



NOTE: Not more than 2 corners, all in the same town and range, may be recorded on this certificate.

A. Description of original monument and accessories and/or subsequent restoration:

Original corner established in October, 1851 by Guy H. Carleton, U.S. Deputy Surveyor.
Original Corner; Wood Post
Original Bearing Trees:

Sugar	16"	S 45° E	14 links (9.24 feet)
Sugar	18"	N 20° W	60 links (39.60 feet)

PEER GROUP APPROVED
Iron County 12-18-98
COUNTY REPRESENTATIVE

B. Description of corner evidence found and/or method applied in restoring or reestablishing corner:

No evidence of original B.T.s found. Set a 60 penny nail in the centerline line of an East/West county road and in line with a rock fence line to the North. Corner position is very close to an equal split of the section line.

I accept this process as the best available evidence for restoring the corner position.

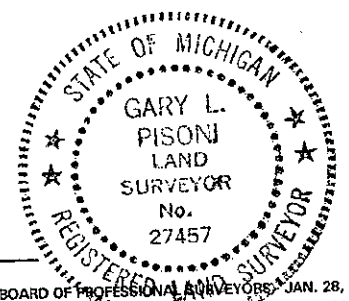
Distances along the Section line are consistent with GLO distances.

Corner record research on file with County Representative.

C. Description of monument for corner and accessories established to perpetuate locating the position of the corner:

From the above described corner position, I set two reference monuments, being a 5/8" diameter by 30" long rebar pin, with a 3" aluminum cap stamped as follows: Iron County Remonumentation, T42N, R33W, R.M., 1/4, S-8, S-17, S 01° W, 31.19 Feet, 1998, RLS 27457; T42N, R33W, R.M., 1/4, S-8, S-17, N 36° E, 55.31 Feet, 1998, RLS 27457, from which I blazed and scribed the following new bearing trees: (All measurements taken to a nail in side of tree)

Red Maple	12"	N 50° W	69.09 feet
R.M. 5/8"x30" rebar		N 01° E	31.19 feet
Utility Pole #86-24532		S 73° E	117.37 feet
R.M. 5/8"x 30" rebar		S 36° W	55.31 feet
Iron Pipe 1" diameter		S 03° E	35.90 feet
Steel sign post		N 01° E	32.00 feet



98-51
Signed by Gary L. Pisoni Date 12-21-98
Surveyor's Michigan License No. 27457

L. 7 P. 265