

SURVEY & REMONUMENTATION

JAN 13 1998

SECTION

LAND CORNER RECORDATION CERTIFICATE
 Filing Requirement of Act 74, Mich. P.A. 1970

IRON COUNTY
 MICHIGAN
 RECEIVED FOR RECORD

97 DEC 23 PM 1:32

L. C. Records L.P. 181

Gilbert J. Pisoni
 REGISTER OF DEEDS

For corners in

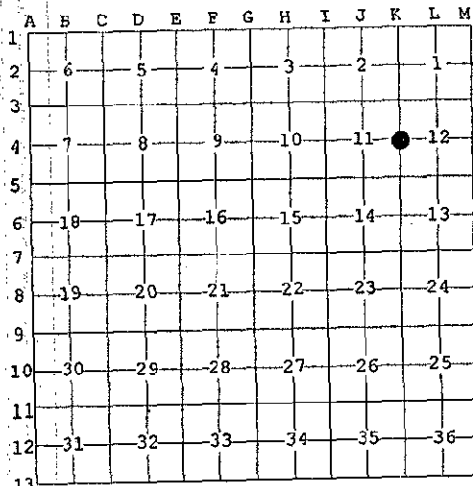
Iron (County)	Located In:	Corner Code #
1. Public Land Survey	T <u>42N</u> R <u>33W</u>	<u>K-4</u>
	T _____ R _____	_____
	T _____ R _____	_____
	T _____ R _____	_____
2. Property Controlling in Section	S _____ T _____ R _____	_____
	S _____ T _____ R _____	_____
3. Miscellaneous Property in Sec.	S _____ T _____ R _____	_____
	S _____ T _____ R _____	_____

Register of Deeds Stamp & File Number

4. Lot No. _____, Recorded Plat _____
 5. Private Claims _____

Quarter Corner Between Sections 11 and 12, T42N, R33W

I, Gary L. Pisoni, in a field survey on December 16, 1997 do hereby state that under requirements of P.A. 74, Michigan P.A. of 1970, the corner points mentioned in lines 1 and 2 above were in conformance with regulations and rules therefore as required in the current manual of survey instructions of the United States Department of the Interior, Bureau of Land Management or by a decree of a Court of Law and /or that the corner points mentioned in lines 3, 4 and 5 above were in conformance with the rules of the Michigan Board of Land Surveyors or by a Decree of a Court of Law; established, re-established, monumented, recovered, found as expressed below:



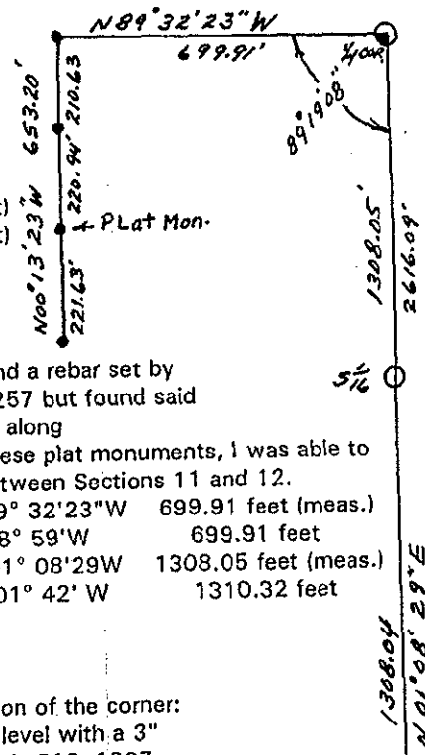
NOTE: Not more than 2 corners, all in the same town and range, may be recorded on this certificate.

PEER GROUP APPROVED
Henry L. Pisoni 12-19-97
 IRON COUNTY REPRESENTATIVE

A. Description of original monument and accessories and/or subsequent restoration:
 Original Corner established in 1851 by Guy H. Carleton, U.S. Deputy Surveyor.
 Original Corner: Wood Post
 Original Bearing Trees:

Hemlock	6"	S 45° E	27 lks (17.82 feet)
Hemlock	12"	N 75° W	50 lks (33.00 feet)

B. Description of corner evidence found and/or method applied in restoring or reestablishing corner:
 No evidence of original B. T.s found.



Corner position located along the North lane of a woods road which runs Northwesterly. Found a rebar set by Ewart C. Muller RLS marking the quarter corner position on Sept. 9, 1992 recorded in L. 6, P257 but found said corner to be located in the wrong location. I found the plat iron pins of the Plat of Homecroft along Central Avenue (never built) and the plat iron pin at the Southeast corner of Block 4. From these plat monuments, I was able to re-establish the Northeast corner of the Plat of Homecroft, which is also the quarter corner between Sections 11 and 12.

Distance from: East quarter Section 11 to NW corner Block 2 of plat (actual bearing)	N 89° 32' 23" W	699.91 feet (meas.)
	Plat bearing	N 88° 59' W 699.91 feet
East quarter Section 11 to S 1/16 corner (actual bearing)	S 01° 08' 29" W	1308.05 feet (meas.)
	Plat bearing	S 01° 42' W 1310.32 feet

Corner record research on file with County Representative.

C. Description of monument for corner and accessories established to perpetuate locating the position of the corner:
 At the corner position, set a 2" dia. by 30" long aluminum pipe monument, 2" below ground level with a 3" dia. aluminum cap stamped as follows: Iron County Remonumentation, T42N, R33W, 1/4, S11, S12, 1997, RLS 27457 from which the following bear: (measurements taken to a nail in side of tree)

(Erroneous) Rebar w/cap	#15408 5/8" dia	N 74° 49' 24" W	14.87 feet
Sugar Maple	12"	N 63° E	43.36 feet
Sugar Maple	5"	S 68° W	41.58 feet
Sugar Maple	5"	N 77° W	45.72 feet
Sugar Maple	7" dbl	N 16° W	62.63 feet
Steel sign post		S 11° E	0.71 feet

COR. IN POND 11/12 14/13

97-11b Signed by Gary L. Pisoni Date December 17, 1997
 Surveyor's Michigan License No. 27457

FORM APPROVED BY MICHIGAN STATE BOARD OF PROFESSIONAL SURVEYORS, JAN. 28, 1971
 REVISION MAY 1975
 REVISION JAN. 1983
 REVISION OCT. 1995

