

SURVEY & REMONUMENTATION

JAN 13 1998

SECTION

LAND CORNER RECORDATION CERTIFICATE
Filing Requirement of Act 74, Mich. P.A. 1970

IRON COUNTY
MICHIGAN
RECEIVED FOR RECORD

97 DEC 23 PM 1:32

L.C. Records 47 P. 180

Gary L. Pisoni
REGISTER OF DEEDS

Register of Deeds Stamp & File Number

For corners in

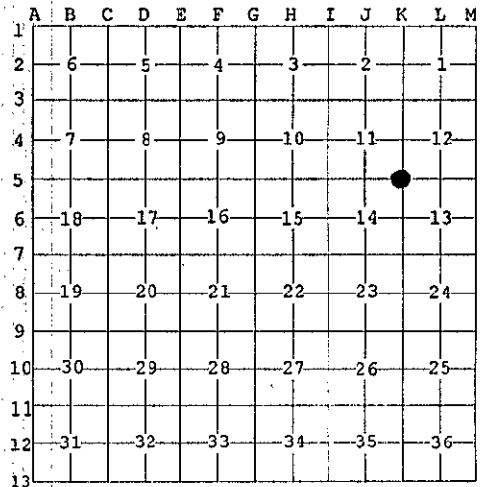
Iron (County)	Located In:	Corner Code #
1. Public Land Survey	T <u>42N</u> R <u>33W</u>	<u>K-5</u>
	T _____ R _____	_____
	T _____ R _____	_____
	T _____ R _____	_____
2. Property Controlling in Section	S _____ T _____ R _____	_____
	S _____ T _____ R _____	_____
3. Miscellaneous Property in Sec.	S _____ T _____ R _____	_____
	S _____ T _____ R _____	_____

4. Lot No. _____, Recorded Plat _____
5. Private Claims _____

Section Corner Common to Sections 11, 12, 13, 14, T42N, R33W

I, Gary L. Pisoni, in a field survey on December 16, 1997 do hereby state that under requirements of P.A. 74, Michigan P.A. of 1970, the corner points mentioned in lines 1 and 2 above were in conformance with regulations and rules therefore as required in the current manual of survey instructions of the United States Department of the Interior, Bureau of Land Management or by a decree of a Court of Law and /or that the corner points mentioned in lines 3, 4 and 5 above were in conformance with the rules of the Michigan Board of Land Surveyors or by a Decree of a Court of Law; established, re-established, monumented, recovered, found as expressed below:

NOTE: Not more than 2 corners, all in the same town and range, may be recorded on this certificate.



A. Description of original monument and accessories and/or subsequent restoration:
Original Corner established in 1851 by Guy H. Carleton, U.S. Deputy Surveyor.
Original Corner: Post
Original Bearing Trees:

Sugar	10"	N 30° E	29 lks (19.14 feet)
Sugar	18"	S 15° W	44 lks (29.04 feet)

B. Description of corner evidence found and/or method applied in restoring or reestablishing corner:
No evidence of original B.T.s found.

Corner position is now located in a mine test pit which is now a pond. I restored the corner position by using the bearing and doubled the distance from the South quarter corner of Section 12 thru the West 1/16 corner between Sections 12 and 13 which are plat monuments, to the Southwest corner of Section 12. The distance from the Southwest corner of Section 12 to the West quarter of Section 12 checks very close to the platted distance of the Plat of Homcroft.

Distance to:	SW Corner of Section 12 to W 1/16	N 89° 25'12"E	1324.04 feet
	W 1/16 Corner to S 1/2 of Section 12	N 89° 25'12"E	1324.04 feet
	SW Corner of Section 12 to W 1/4	N 01° 08'29"E	2616.09 feet

The above procedure seems to best fit how the Section corner was established and used many years ago. Corner record research on file with County Representative.

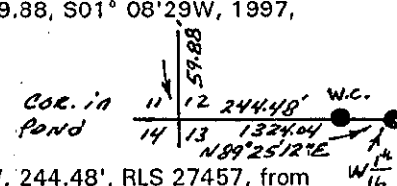
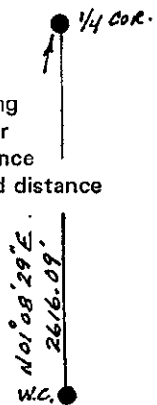
C. Description of monument for corner and accessories established to perpetuate locating the position of the corner:
Corner position located in a pond. Set two witness corners, one being on the North Bank and the other on the East Bank, both consisting of 2" dia. by 30" long aluminum pipe monuments, 1" above ground surface with a 3" dia. aluminum cap stamped as follows: Iron County Remonumentation, T42N, R33W, W.C., S11, S12, S14, S13, 59.88, S01° 08'29"W, 1997, RLS 27457 from which the following bear: (measurements taken to a nail in side of tree)

Sugar Maple	6" dbl	N 05° W	2.87 feet
Basswood	8"	N 49° E	65.21 feet
Sugar Maple	5"	N 79° W	22.86 feet
Steel sign post		S 70° E	0.51 feet

Iron County Remonumentation, T42N, R33W, W.C., S11, S12, S14, S13, 1997, S89° 25'12"W, 244.48', RLS 27457, from which the following bear: (measurements taken to a nail in side of tree)

Rebar	5/8"x30"	N 41° E	30.36 feet
W. Birch	10"	N 80° E	53.06 feet
Popple	16"	S 75° W	8.82 feet
Steel sign post		S 63° E	0.77 feet

PEER GROUP APPROVED
Gary L. Pisoni 12-19-97
IRON COUNTY REPRESENTATIVE



97-10b
Signed by Gary L. Pisoni
Surveyor's Michigan License No. 27457

Date December 17, 1997

