

**SURVEY & REMONUMENTATION**

**JAN 13 1998**

**SECTION**

**LAND CORNER RECORDATION CERTIFICATE**  
Filing Requirement of Act 74, Mich. P.A. 1970

IRON COUNTY  
MICHIGAN  
RECEIVED FOR RECORD

97 DEC 23 PM 1:32  
L.C. Records L.P. 183

*Gilbert Stetson*  
REGISTER OF DEEDS

For corners in

_____ Iron _____ (County)	Located In:	Corner Code #
1. Public Land Survey	T <u>42N</u> R <u>33W</u>	<u>M-4</u>
	T <u>42N</u> R <u>32W</u>	<u>A-4</u>
	T _____ R _____	_____
	T _____ R _____	_____
2. Property Controlling in Section	S _____ T _____ R _____	_____
	S _____ T _____ R _____	_____
3. Miscellaneous Property in Sec.	S _____ T _____ R _____	_____
	S _____ T _____ R _____	_____

Register of Deeds Stamp & File Number

4. Lot No. \_\_\_\_\_, Recorded Plat \_\_\_\_\_  
5. Private Claims \_\_\_\_\_

Quarter Corner between Section 12, T42N, R33W and Section 7, T42N, R32W

I, Gary L. Pisoni, in a field survey on December 4, 1997 do hereby state that under requirements of P.A. 74, Michigan P.A. of 1970, the corner points mentioned in lines 1 and 2 above were in conformance with regulations and rules therefore as required in the current manual of survey instructions of the United States Department of the Interior, Bureau of Land Management or by a decree of a Court of Law and /or that the corner points mentioned in lines 3, 4 and 5 above were in conformance with the rules of the Michigan Board of Land Surveyors or by a Decree of a Court of Law; established, re-established, monumented, recovered, found as expressed below:

NOTE: Not more than 2 corners, all in the same town and range, may be recorded on this certificate.

A	B	C	D	E	F	G	H	I	J	K	L	M
1												
2	6	5	4	3	2	1						
3												
4	7	8	9	10	11	12						
5												
6	18	17	16	15	14	13						
7												
8	19	20	21	22	23	24						
9												
10	30	29	28	27	26	25						
11												
12	31	32	33	34	35	36						
13												

PEER GROUP APPROVED  
*Gary L. Pisoni 12-19-97*  
IRON COUNTY REPRESENTATIVE

A. Description of original monument and accessories and/or subsequent restoration:  
Original Corner established in 1846 by Austin Burt, U.S. Deputy Surveyor.  
Original Corner: Cedar Post  
Original Bearing Trees:  
White Pine 12" S 67° E 149 lks (98.34 feet)  
Tamarack 8" N 61 1/2° W 204 lks (134.64 feet)

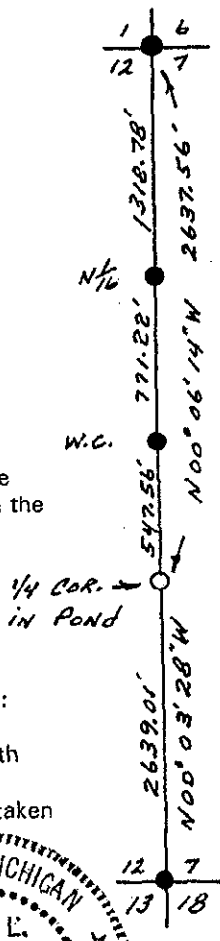
B. Description of corner evidence found and/or method applied in restoring or reestablishing corner:  
No evidence of original B.T.'s found.

Corner position is now located in a pond due to mining activity. I found the Northeast corner of Section 12 and the N 1/16 corner between Sections 12 and 7 and both consist of iron bars encased in concrete and were probably set by the mining company. I reset the quarter corner mathematically by doubling the distance between the Section corner and the 1/16 corner and on line between same corners. Set a witness corner on the North bank of the pond, said monument being 38 feet from waters edge.  
Distance to: NE Corner Sec. 12 to N 1/16 S 00° 06'14"E 1318.78 feet  
N 1/16 to E 1/4 Sec. 12 S 00° 06'14"E 1318.78 feet

Corner record research on file with County Representative.

C. Description of monument for corner and accessories established to perpetuate locating the position of the corner:  
Set a witness corner being a 3/4" dia. aluminum rod monument 3 feet long and 1" above ground surface with a 3" dia. aluminum cap stamped as follows: Iron County Remonumentation, T42N, W.C., 1/4, S-12, S-7, S 00° 06'14"E, 547.56', R33W, R32W, 1997, RLS 27457 from which the following bear: (measurements taken to a nail in side of tree)

Balsam Poplar	11"	N 08° E	23.64 feet
Spruce	6"	S 75° W	39.79 feet
Spruce	8"	N 74° W	36.31 feet
Steel sign post		S 25° E	0.75 feet



97-13b  
Signed by Gary L. Pisoni Date December 17, 1997  
Surveyor's Michigan License No. 27457

