

1993

COMMISSION

LAND CORNER RECORDATION CERTIFICATE
Filing Requirement of Act 74, Mich. P.A. 1970

IRON COUNTY
MICHIGAN
RECEIVED FOR RECORD

93 DEC 29 PM 2:21
L.C. RECORDS L.C. P. 296

Gilbert Stebbins
REGISTER OF DEEDS

For corners in

Iron (County)	Located In:	Corner Code #
1. Public Land Survey	T 42N R 34W	K-6
	T _____ R _____	_____
	T _____ R _____	_____
	T _____ R _____	_____
2. Property Controlling in Section	S _____ T _____ R _____	_____
	S _____ T _____ R _____	_____
3. Miscellaneous Property in Sec.	S _____ T _____ R _____	_____
	S _____ T _____ R _____	_____

Register of Deeds Stamp & File Number

4. Lot No. _____, Recorded Plat _____
5. Private Claims _____

Quarter Corner 14-13 T42N R34W

I, Gary L. Pisoni, in a field survey on December 20, 1993
do hereby certify that under requirements of P.A. 74, Michigan P.A. of 1970, the corner points mentioned
in lines 1 and 2 above were in conformance with regulations and rules therefore as required in the
current manual of survey instructions of the United States Department of the Interior, Bureau of Land
Management or by a decree of a Court of Law and/or that the corner points mentioned in lines 3, 4 and 5
above were in conformance with the rules of the Michigan Board of Land Surveyors or by a Decree of a
Court of Law; established, re-established, monumented, re-monumented, recovered, found as
expressed below:

**NOTE: Not more than 4 corners, all in the same town and range, may be recorded
on this certificate.**

A. Description of original monument and accessories and/or subsequent restoration:

Original corner established by Guy H. Carleton, U.S. Deputy Surveyor in 1851.
Original corner: Wood Post
Original bearing trees:
Sugar Maple 16" N 53°W 40 links (26.40 feet)
Aspen 10" S 70°W 32 links (21.12 feet)

B. Description of corner evidence found and/or method applied in restoring or reestablishing corner:

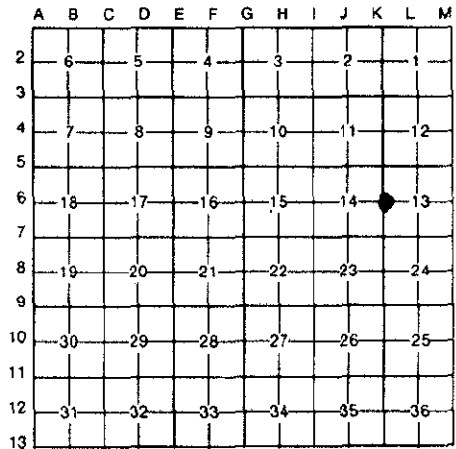
No evidence of original corner or bearing tree remains. Corner position found
marked by a 1" X 24" drill rod. Corner position has been used and accepted
as the corner locally, for many years. Set an aluminum pipe monument over the
top of drill rod as described below. Monument is 3" above ground surface.

This corner is accepted as the best available evidence of the position of the
original corner.

C. Description of monument for corner and accessories established to perpetuate locating the position of the corner:

At the corner position, I set a 2" diameter by 30" long split base aluminum pipe
monument with a 3" cast aluminum cap, stamped to read: Iron County Remonumentation,
T42N, R34W, 1/4, s-14, S-13, 1993, RLS 27457 from which I established the following
new blazed and scribed bearing trees: (all measurements taken to a nail in side of tree)

Yellow Birch	11"	N 59°E	53.59 feet
Hemlock	8"	S 85°E	43.32 feet
Hemlock	6"	N 89°W	10.79 feet
Hemlock	14"	N 05°W	13.05 feet
Steel Sign Post		North	0.96 feet



Signed by Gary L. Pisoni
Surveyor's Michigan License No. 27457

Date 12-28-93

