

**SURVEY & REMONUMENTATION**

**FEB 21 2001**

**SECTION**

**LAND CORNER RECORDATION CERTIFICATE**  
Filing Requirement of Act 74, Mich. P.A. 1970

COMMENCING YEAR 2000  
RECEIVED FOR RECORD  
IRON COUNTY, MICHIGAN

00 DEC 22 PH 3: 25  
*L.C. Recyds: 1.8, P. 304*  
*Gary L. Pisoni*  
REGISTERED LAND SURVEYOR

For corners in

<u>Iron</u> (County)	Located In:	Corner Code #
1. Public Land Survey	T <u>43N</u> R <u>31W</u>	<u>C-11.12b</u> <u>(002)</u>
	T _____ R _____	_____
	T _____ R _____	_____
	T _____ R _____	_____
2. Property Controlling in Section	S _____ T _____ R _____	_____
	S _____ T _____ R _____	_____
3. Miscellaneous Property in Sec.	S _____ T _____ R _____	_____
	S _____ T _____ R _____	_____

Register of Deeds Stamp & File Number

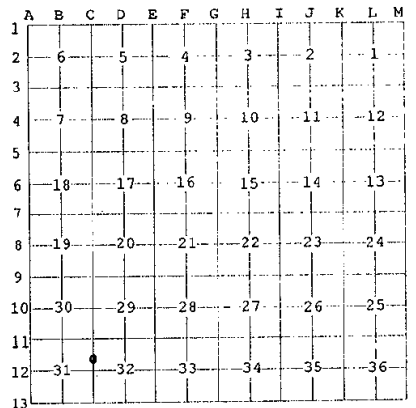
4. Lot No. \_\_\_\_\_, Recorded Plat \_\_\_\_\_  
5. Private Claims \_\_\_\_\_

North Meander Corner Between Sections 31 and 32, T43N, R31W

I, Gary L. Pisoni, in a field survey on December 6, 2000 do hereby state that under requirements of P.A. 74, Michigan P.A. of 1970, the corner points mentioned in lines 1 and 2 above were in conformance with regulations and rules therefore as required in the current manual of survey instructions of the United States Department of the Interior, Bureau of Land Management or by a decree of a Court of Law and/or that the corner points mentioned in lines 3, 4 and 5 above were in conformance with the rules of the Michigan Board of Land Surveyors or by a Decree of a Court of Law; established, re-established, monumented, recovered, found as expressed below:

NOTE: Not more than 2 corners, all in the same town and range, may be recorded on this certificate.

PEER GROUP APPROVED  
*Iron Gary L. Pisoni 12-20-2000*  
COUNTY REPRESENTATIVE



A. Description of original monument and accessories and/or subsequent restoration:

Original corner established on July 16, 1849 by John Burt, U.S. Deputy Surveyor.  
Original Corner; Wood Post  
Original Bearing Trees:  
Spruce 12" N 05° W 25 links (16.50 feet)  
Cedar 9" S 82° E 19 links (12.54 feet)

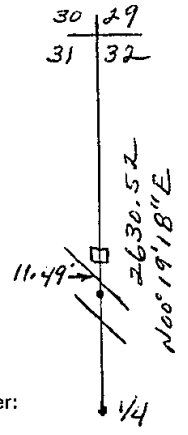
B. Description of corner evidence found and/or method applied in restoring or reestablishing corner:

No evidence of original B.T.s found.  
Corner located on the North bank of the Michigamme River and is 12' from waters edge.  
Restored the corner position by single proportionate measurement and set a witness corner meander corner on line between the Northwest Section corner and West Quarter corner of Section 32.  
Corner record research on file with County Representative.

C. Description of monument for corner and accessories established to perpetuate locating the position of the corner:

At the corner position, set a 5/8" diameter by 30" long rebar pin with a 3" diameter aluminum cap stamped as follows: Iron County Remonumentation, T43N, R31W, W.C.M.C., S-31, S-32, S 00° 19'18"W, 11.49 feet, 2000, RLS 27457 from which I established the following new blazed and scribed bearing trees: (all measurements taken to a nail in side of tree)

Ash	6"	N 08° W	14.27 feet
Spruce	12"	N 58° E	27.11 feet
Balsam	5"	S 53° E	20.41 feet
Steel sign post		S 49° W	0.7 feet



00-072  
Signed by Gary L. Pisoni Date 12-19-2000  
Surveyor's Michigan License No. 27457

FORM APPROVED BY MICHIGAN STATE BOARD OF PROFESSIONAL SURVEYORS, JAN. 28, 1971  
REVISED: MAY, 14, 1976  
REVISED: JAN., 1983  
REVISED: OCT., 1995

