

MICHIGAN  
DEPARTMENT OF CONSERVATION  
FORESTRY DIVISION

LAND CORNER RECORD

T. 43 N.R. 31 W

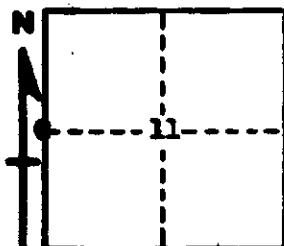
Iron COUNTY

DESCRIPTION OF CORNER 1/4 Corner for Secs. 10/11

CORNER MONUMENT 1" Iron Pipe with 4" Aluminum Cap

DATE MONUMENT PLACED AND WITNESSED 7/7/65 with Forester Rose

WITNESSES TO CORNER..... 9" Cedar (1/4S NBT), N 71° W, 21 lks.



9" Cedar (1/4S NBT), S 45° E, 21 lks.

6" Cedar (1/4S NBT), S 24° W, 23 lks.

AND

CIRCLE CORNER REGISTERED

DESCRIPTION IN DETAIL AS TO HOW CORNER WAS LOCATED AND IDENTIFIED OR RESTORED.

This Corner was replaced from (2) two old and (1) new Wood Post which check for bearing and distance with (2) rotted cedar stumps which were original BT's . Signature tree in vicinity dates back to 1919.

SURVEYOR'S SEAL

SIGNED Frank J. Gray DATE 2/10/1966  
REGISTERED LAND SURVEYOR