

MAR 09 2000

SECTION

LAND CORNER RECORDATION CERTIFICATE
Filing Requirement of Act 74, Mich. P.A. 1970

For corners in

Iron (County)	Located In:	Corner Code #
1. Public Land Survey	T <u>43N</u> R <u>32W</u>	<u>E-5</u>
	T _____ R _____	_____
	T _____ R _____	_____
	T _____ R _____	_____
2. Property Controlling in Section	S _____ T _____ R _____	_____
	S _____ T _____ R _____	_____
3. Miscellaneous Property in Sec.	S _____ T _____ R _____	_____
	S _____ T _____ R _____	_____

IRON COUNTY
MICHIGAN
RECEIVED FOR RECORD

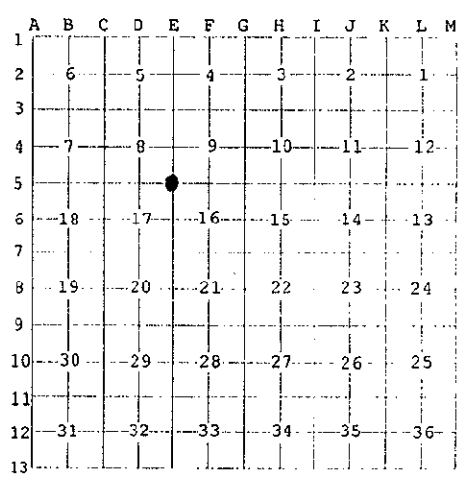
99 DEC 30 AM 10:11
L.C. Records: L. 8, P. 19
Gordon Stebbins
REGISTER OF DEEDS

Register of Deeds Stamp & File Number

4. Lot No. _____, Recorded Plat _____
5. Private Claims _____

Section Corner Sections 8, 9, 16, 17, T43N, R32W

I, Gary L. Pisoni, in a field survey on April 23, 1999 do hereby state that under requirements of P.A. 74, Michigan P.A. of 1970, the corner points mentioned in lines 1 and 2 above were in conformance with regulations and rules therefore as required in the current manual of survey instructions of the United States Department of the Interior, Bureau of Land Management or by a decree of a Court of Law and /or that the corner points mentioned in lines 3, 4 and 5 above were in conformance with the rules of the Michigan Board of Land Surveyors or by a Decree of a Court of Law; established, re-established, monumented, recovered, found as expressed below:



NOTE: Not more than 2 corners, all in the same town and range, may be recorded on this certificate.

A. Description of original monument and accessories and/or subsequent restoration:

Original corner established on August 16, 1849 by Zelotes B. Searls, U.S. Deputy Surveyor
Original Corner: Spruce Post
Original Bearing Trees:
Cedar 18" S 65°E 44 lks. (29.04 feet)
Hemlock 14" N 70°W 6 lks. (3.96 feet)

PEER GROUP APPROVED
Iron 12-21-99 *Steve Pisoni*
COUNTY REPRESENTATIVE

Corner shown monumented by drill rod on a survey dated 2-24-80 by Donald Lappala RLS filed with Iron County Equalization Dept. Same corner shown on a survey recorded in Liber.1, Page 112 by Gary L. Pisoni. On 6/8/94, Steven J. Szyzkoski RLS, with the DNR, found the 1" diameter drill rod marking the corner position and recorded a Land Corner Certificate in Liber 6, Page 318.

1994 Bearing Trees:
Cedar 12" N 56° E 24.5 feet
Cedar 12" S 68° E 11.0 feet
Cedar 12" S 17° W 6.0 feet
Cedar 11" S 53° W 10.6 feet

B. Description of corner evidence found and/or method applied in restoring or reestablishing corner:

On 4/23/99, found the drill rod as described above and the following bearing trees:
Cedar 12" N 56°E 24.88 feet
Cedar 14" S 68°E 11.40 feet
Cedar 14" S 17°W 6.47 feet
Cedar 12" S 53°W 11.08 feet

Corner record research on file with County Representative.

C. Description of monument for corner and accessories established to perpetuate locating the position of the corner:

Replaced the drill rod with a 3/4" diameter aluminum rod monument, 3 feet long and 2" above ground surface with a 3" diameter aluminum cap stamped as follows: Iron County Remonumentation, T43N, R32W, S-8, S-9, S-16, S-17, 1999, RLS 27457, and set one reference object:
Steel sign post S 26°E 0.74 feet

99-19
Signed by Gary L. Pisoni Date 12-28-99
Surveyor's Michigan License No. 27457

FORM APPROVED BY MICHIGAN STATE BOARD OF PROFESSIONAL SURVEYORS, JAN. 28, 1971
REVISOR MAY 14, 1975
REVISOR JAN., 1983
REVISOR OCT., 1995

