

RF

MAR 9 2000

SECTION

LAND CORNER RECORDATION CERTIFICATE
Filing Requirement of Act 74, Mich. P.A. 1970

For corners in

Table with columns: Iron (County), Located In: (Town/Range), Corner Code #. Includes entries for Public Land Survey, Property Controlling in Section, and Miscellaneous Property in Sec.

IRON COUNTY MICHIGAN RECEIVED FOR RECORD

99 DEC 30 AM 10:22

L.C. Records: L. S. P. 25

Handwritten signature: Robert J. Pisoni

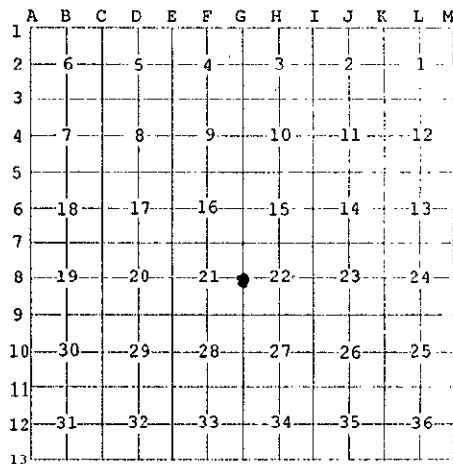
Register of Deeds Stamp & File Number

4. Lot No. , Recorded Plat
5. Private Claims

Quarter Corner to Sections 21 and 22, T43N, R32W

I, Gary L. Pisoni, in a field survey on Oct. 23, 1999, do hereby state that under requirements of P.A. 74, Michigan P.A. of 1970, the corner points mentioned in lines 1 and 2 above were in conformance with regulations and rules therefore as required in the current manual of survey instructions of the United States Department of the Interior, Bureau of Land Management or by a decree of a Court of Law and /or that the corner points mentioned in lines 3, 4 and 5 above were in conformance with the rules of the Michigan Board of Land Surveyors or by a Decree of a Court of Law; established, re-established, monumented, recovered, found as expressed below:

NOTE: Not more than 2 corners, all in the same town and range, may be recorded on this certificate.



A. Description of original monument and accessories and/or subsequent restoration:

Original corner established on August 6, 1849 by Z. B. Searls, U.S. Deputy Surveyor. Original Corner; Hemlock Wood Post Original Bearing Trees:

Table listing bearing trees: White Birch (12", S 75° E, 16 lks (10.56 feet)), Aspen (18", N 70° W, 11 lks (7.26 feet))

PEER GROUP APPROVED

Iron Gary L. Pisoni 12-21-99

COUNTY REPRESENTATIVE

B. Description of corner evidence found and/or method applied in restoring or reestablishing corner:

No evidence of original B.T.s found.

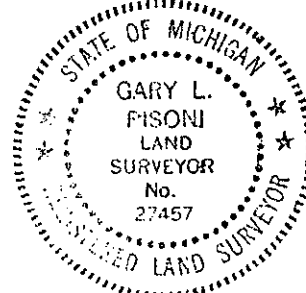
Restored corner position from a found 1" diameter iron bar. Found an existing Red Pine bearing tree (dead) facing corner position, which is 7" in diameter and bears N 12° E, 13.35 feet. I accept the iron bar as the best available evidence for restoring the corner position.

Corner record research on file with County Representative.

C. Description of monument for corner and accessories established to perpetuate locating the position of the corner:

Set one (1) reference monument, being a 5/8" diameter by 30" long rebar pin with a 3" diameter aluminum cap stamped as follows: Iron County Remonumentation, T43N, R32W, R.M., S-21, S-22, South, 0.58 feet, 1999, RLS 27457 from which I established the following new blazed and scribed bearing trees: (All measurements taken to a nail in side of tree)

Table listing new bearing trees: Red Pine (dead) 7" N 12° E 13.35 feet, Sugar Maple 7" N 36° E 28.08 feet, Red Maple 6" S 41° E 37.20 feet, Sugar Maple 7" S 59° W 25.20 feet, Sugar Maple 6" N 71° W 26.77 feet, R.M. 5/8" x 30" rebar North 0.58 feet, Steel sign post North 1.2 feet



99-75

Signed by Gary L. Pisoni Date 12-28-99

Surveyor's Michigan License No. 27457

FORM APPROVED BY MICHIGAN STATE BOARD OF PROFESSIONAL SURVEYORS, JAN. 28, 1971 REVISED MAY 14, 1975 REVISED JAN., 1993 REVISED OCT., 1995