

MAR 09 2000

SECTION

LAND CORNER RECORDATION CERTIFICATE
Filing Requirement of Act 74, Mich. P.A. 1970

For corners in

Form with fields for Iron (County), Located In: T 43N R 32W, Corner Code # 1-5, and sections 1-3 for Public Land Survey, Property Controlling in Section, and Miscellaneous Property in Sec.

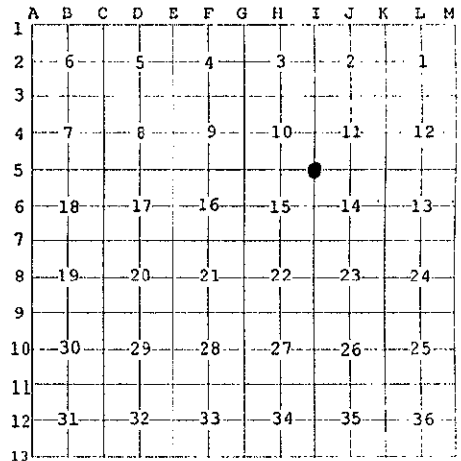
IRON COUNTY MICHIGAN RECEIVED FOR RECORD 99 DEC 30 AM 10:18 L.C. Records: 2, 8, P. 53 Register of Deeds Stamp & File Number

4. Lot No. , Recorded Plat
5. Private Claims

Section Corner to Sections 10, 11, 14, 15, T43N, R32W

I, Gary L. Pisoni, in a field survey on October 5, 1999 do hereby state that under requirements of P.A. 74, Michigan P.A. of 1970, the corner points mentioned in lines 1 and 2 above were in conformance with regulations and rules therefore as required in the current manual of survey instructions of the United States Department of the Interior, Bureau of Land Management or by a decree of a Court of Law and /or that the corner points mentioned in lines 3, 4 and 5 above were in conformance with the rules of the Michigan Board of Land Surveyors or by a Decree of a Court of Law; established, re-established, monumented, recovered, found as expressed below:

NOTE: Not more than 2 corners, all in the same town and range, may be recorded on this certificate.



A. Description of original monument and accessories and/or subsequent restoration:

Original corner established on Aug. 21, 1849 by Zelotes B. Searls, Deputy Surveyor. Original Corner: White Pine Post Original Bearing Trees: Spruce 10" S 15° E 25 lks (16.50 feet) Yellow Pine 8" N 25° W 26 lks (17.16 feet) On 12/3/52, Murray S. Gates, RLS restored the corner position from a found yellow pine B.T. with scribe marks. Set an iron pin at corner position, recorded in Liber 2, Page 25 of L.C. records. 1952 Bearing Trees: Poplar 4" West 12.6 feet Poplar 4" S 32° W 11.2 feet Poplar 7" S 52° E 3.8 feet

PEER GROUP APPROVED Iron Day of Form 12-31-99 COUNTY REPRESENTATIVE

B. Description of corner evidence found and/or method applied in restoring or reestablishing corner:

Found no evidence of iron pin or the above bearing trees as set by Murray Gates. Restored corner position at record bearing and distance from the remains of the Yellow Pine bearing tree (decayed stump). Corner record research on file with County Representative.

C. Description of monument for corner and accessories established to perpetuate locating the position of the corner: At the corner position, set a 2" diameter by 30" long split base aluminum pipe monument, with a 3" dia. aluminum cap stamped as follows: Iron County Remonumentation, T43N, R32W, S-10, S-11, S-15, S-14, 1999, RLS 27457 from which I established the following new blazed and scribed bearing trees:(All measurements taken to a nail in side of tree)

Black Spruce 8" N 07° E 12.99 feet Red Maple 4" N 88° E 20.96 feet Black Spruce 7" S 11° W 16.58 feet Rebar 5/8" dia. S 13° 55'47"W 26.20 feet Black Spruce 5" S 73° W 24.83 feet Steel sign post North 0.68 feet

99-53 Signed by Gary L. Pisoni Date 12-28-99

Surveyor's Michigan License No. 27457

FORM APPROVED BY MICHIGAN STATE BOARD OF PROFESSIONAL SURVEYORS, JAN. 28, 1971 REVISED MAY 14, 1975 REVISED JAN., 1983 REVISED OCT., 1995

