

LAND CORNER RECORDATION CERTIFICATE
Filing Requirement of Act 74, Mich. P.A. 1970

For corners in
 Iron

(County)	Located In	Corner Code -//
1. Public Land Survey	T 43N R 32W	E5
	T R	
	T R	
	T R	
2. Property Controlling in Section	S 17 T 43N R 32W	12
	S 17 T 43N R 32W	WC west of 5
3. Miscellaneous Property in Sec	S T R	
	S T R	

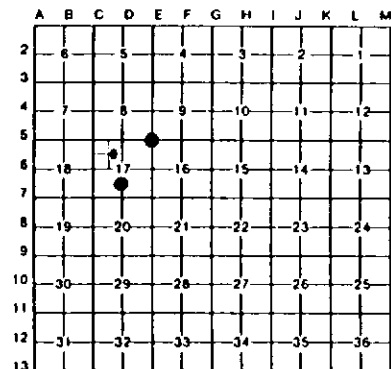
Register of Deeds Stamp & File Number

4. Lot No. _____, Recorded Plat _____
 5. Private Claims _____

WC June 08, 1994
 12 May 17, 1994

I, Stephan J. Szyszkoski, in a field survey on E5 June 08, 1994, 19_____, do hereby certify that under requirements of P.A. 74, Michigan P.A. of 1970, the corner points mentioned in lines 1 and 2 above were in conformance with regulations and rules therefore as required in the current manual of survey instructions of the United States Department of the Interior, Bureau of Land Management or by a decree of a Court of Law and/or that the corner points mentioned in lines 3, 4 and 5 above were in conformance with the rules of the Michigan Board of Land Surveyors or by a Decree of a Court of Law, established, re-established, monumented, re-monumented, recovered, found as expressed below.

NOTE: Not more than 4 corners, all in the same town and range, may be recorded on this certificate.



A. Description of original monument and accessories and/or subsequent restoration:

(E5) Corner common to Sections 8-9-16-17. Corner established in 1849 by Z.B. Searles as follows: Set spruce post, Cedar 18 S65E 44, Hemlock 12 N70W 6. Corner shown monumented by a drill rod on survey dated 2-24-1980 by Donald Lappala filed with Iron County Equalization. Corner shown on survey rec. LI-P112 by Gary L Pisoni. Found no other record.
 (12-Sec. 17) South 1/16 corner, Section 17. Corner not established in the original survey. Found no subsequent record.
 (WC west of 5) Witness corner between the North 1/16 corner 18/17 and the North 1/16 corner Sec. 17. Corner not established in the original survey. Found no subsequent record.

B. Description of corner evidence found and/or method applied in restoring or reestablishing corner:

(E5) Original post and accessories not recovered. Found 1" drill rod projecting 4" with several old blazes facing it, and an American Can L.P. dated to 1983 facing. Accepted the monument as the best available evidence of the position of the original corner.
 (12-Sec. 17) Found no monumentation at the corner position. Established the corner midway and on a straight line between monumented quarter corner 1319.90' south and monumented center of section 1319.90' north. At the position for the corner, I placed a 1" I.D. x 32" iron pipe capped with a 4" dia. cast aluminum MDNR tablet, appropriately stamped. From the corner monumented, a forester's wood post, marking an approximate position is 35' north and 12' east.
 (WC west of 5) Found no monumentation at this position. Established the corner at a convenient distance east of the Paint River (being 91' east of the edge of water on June 8, 1994) and on a straight line between corners #3 and #5 of Section 17. Corner #5 being a monumented 1/16 corner, and corner #3 being an unmonumented computed position midway between adjacent government corners. At the position for the corner, I placed a 1" I.D. x 32" iron pipe capped with a 4" dia. cast aluminum MDNR tablet, appropriately stamped. The north 1/16 corner of section 17 is 967.92' easterly along the 1/16 line from this monument.

C. Description of monument for corner and accessories established to perpetuate locating the position of the corner:

(E5) Found 1" drill rod projecting 4". Blazed and scribed the following new bearing trees:	(12) Set 1" pipe with 4" MDNR cap. Blazed and scribed the following bearing trees:	(WC w. of 5) Set 1" I.D. pipe with 4" MDNR cap. Blazed and scribed the following bearing trees:
12" Cedar N56E 24.5' "S9 NBT"	7" R. Pine N64E 7.0' "1/16S BT"	6" Cedar N89E 9.9' "WC S17 BT"
12" Cedar S68E 11.0' "S16 NBT"	8" R. Pine S48E 10.4' "1/16S BT"	5" Cedar South 10.4' "WC S17 BT"
12" Cedar S17W 6.0' "S17 NBT"	7" R. Pine S63W 18.3' "1/16S BT"	14" Cedar S65W 22.4' "WC S17 BT"
11" Cedar S53W 10.6' "S17 NBT"	3" W. Pine N28W 17.2' "1/16S BT"	5" Cedar N69W 5.0' "WC S17 BT"
Corner falls at SW corner of clearcut and Aspen regeneration. Bearings are magnetic.	Set 4" squared cedar post adjacent. Bearings are magnetic.	Set 4" squared cedar post adjacent. Bearings are magnetic.

Signed by Stephan J. Szyszkoski

Date 6-14-94

Surveyor's Michigan License No 33986

