

1993

COMMISSION

LAND CORNER RECORDATION CERTIFICATE
Filing Requirement of Act 74, Mich. P.A. 1970

IRON COUNTY
MICHIGAN
RECEIVED FOR RECORD

93 DEC 29 PM 2:21
L.C. RECORDS L.G.P. 302

Gilbert Stobie
REGISTER OF DEEDS

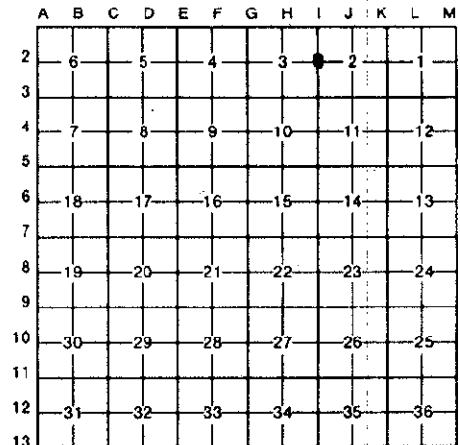
For corners in

Iron (County)	Located In:	Corner Code #
1. Public Land Survey	T 43N R 33W	I-2
	T R	
	T R	
	T R	
2. Property Controlling in Section	S T R	
	S T R	
3. Miscellaneous Property in Sec.	S T R	
	S T R	
4. Lot No. _____, Recorded Plat _____		
5. Private Claims _____		

Register of Deeds Stamp & File Number

Quarter Corner 3-2 T43N R33W

I, Gary L. Pisoni, in a field survey on December 20, 19 93, do hereby certify that under requirements of P.A. 74, Michigan P.A. of 1970, the corner points mentioned in lines 1 and 2 above were in conformance with regulations and rules therefor as required in the current manual of survey instructions of the United States Department of the Interior, Bureau of Land Management or by a decree of a Court of Law and/or that the corner points mentioned in lines 3, 4 and 5 above were in conformance with the rules of the Michigan Board of Land Surveyors or by a Decree of a Court of Law, established, re-established, monumented, re-monumented, recovered, found as expressed below:



NOTE: Not more than 4 corners, all in the same town and range, may be recorded on this certificate.

A. Description of original monument and accessories and/or subsequent restoration:

Original corner established by Guy H. Carleton, U.S. Deputy Surveyor in 1851.
 Original corner: Wood post
 Original bearing trees:

Hemlock	12"	N 51° E	52 links (34.32 feet)
Lynn	16"	S 50° W	28 links (18.48 feet)

B. Description of corner evidence found and/or method applied in restoring or reestablishing corner:

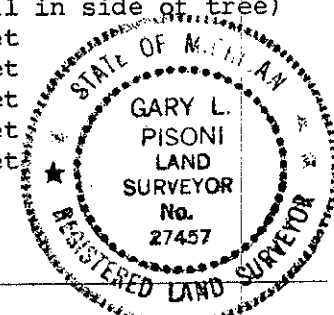
No evidence of original corner or bearing tree remains. Corner position found marked by a 1"x36" bent iron pipe located 16' North of a power line running East and West. Corner position has been used and accepted as the corner locally, for many years. Layed iron pipe next to aluminum monument as described below. Monument is 2" above ground surface.

This corner is accepted as the best available evidence of the position of the original corner.

C. Description of monument for corner and accessories established to perpetuate locating the position of the corner:

At the corner position, I set a 2" diameter by 30" long split base aluminum pipe monument with a 3" cast aluminum cap, stamped to read: Iron County Remonumentation, T43N, R33W, 1/4, S-3, S-2, 1993, R.L.S. 27457; from which I established the following new blazed and scribed bearing trees: (all measurements taken to a nail in side of tree)

Sugar Maple	6"	N 57° E	21.31 feet
Sugar Maple	12"	S 26° E	63.64 feet
Sugar Maple	10"	N 50° W	23.93 feet
Sugar Maple	9"	N 06° W	37.07 feet
Steel sign post		East	1.08 feet



Signed by Gary L. Pisoni Date 12-28-93

Surveyor's Michigan License No. 27457