

LAND CORNER RECORDATION CERTIFICATE
Filing Requirement of Act 74, Mich. P.A. 1970

For corners in

Iron <small>(County)</small>	Located In:	Corner Code #
1. Public Land Survey	T 43N R 33W	C3
	T _____ R _____	_____
	T _____ R _____	_____
	T _____ R _____	_____
2. Property Controlling in Section	S 8 T 43N R 33W	3
	S _____ T _____ R _____	_____
3. Miscellaneous Property in Sec.	S _____ T _____ R _____	_____

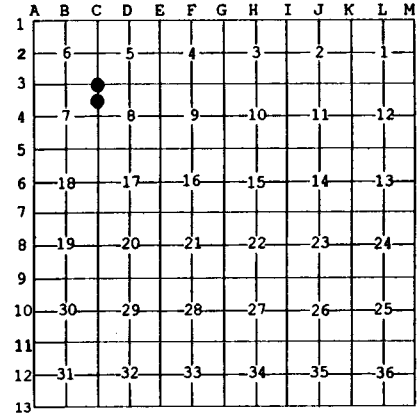
Register of Deeds Stamp & File Number

4. Lot No. _____, Recorded Plat _____
 5. Private Claims _____

Oct 25 2001

I, Stephan J. Szyszkoski, in a field survey on _____, 19____ do hereby state that under requirements of P.A. 74, Michigan P.A. of 1970, the corner points mentioned in lines 1 and 2 above were in conformance with regulations and rules therefore as required in the current manual of survey instructions of the United States Department of the Interior, Bureau of Land Management or by a decree of a Court of Law and /or that the corner points mentioned in lines 3, 4 and 5 above were in conformance with the rules of the Michigan Board of Land Surveyors or by a Decree of a Court of Law, established, re-established, monumented, recovered, found as expressed below:

NOTE: Not more than 2 corners, all in the same town and range, may be recorded on this certificate.



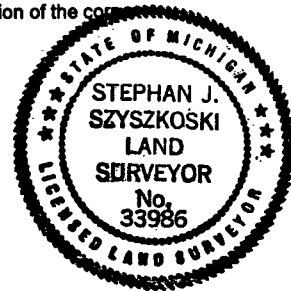
- A. Description of original monument and accessories and/or subsequent restoration:**
 (C3) Corner common to Sections 5-6-7-8. Reestablished in 1973 by A.O. Enger. 1"IDx36" iron pipe with 4" aluminum cap. 8.Spruce 6 N13 1/2W 31.4', Balsam 6 S60 1/2W 8.3', Elm 6 S20E 24.3'.
 (3-Sec. 8) North 1/16 corner between Sections 7 & 8. Established in 1974 by A.O. Enger. 1"ID x 36" iron pipe with 3 1/2" dia. aluminum cap. Red Maple 2 N20W 9.6', Red Maple 2 N27E 9.9'.

B. Description of corner evidence found and/or method applied in restoring or reestablishing corner:

(C3) Recovered the 1973 monument, as described, in good condition, at record bearing and distance from the 1973 witnesses. The 8.Spruce is in good condition, the Elm is a dead stump, 10" dia. with no marks visible, the Balsam is dead but standing. Left the monument in place and made three new witnesses as described below.
 (3-Sec. 8) Recovered the 1974 monument, as described, leaning in rocky ground, at record bearing and distance from the 1974 accessories, both recovered in good condition. Straightened the monument so that it's top is in accord with the record witnesses. Made new markings on the 1974 witnesses and marked two new bearing trees as described below.

C. Description of monument for corner and accessories established to perpetuate locating the position of the corner:

(C3) Found 1"ID iron pipe with 4" alum. MDNR cap. Blazed and scribed:	(3) Found 1"ID iron pipe w/3.5" alum. MDNR cap. Blazed and scribed:
6" Balsam N33E 12.6' "S5 NBT"	8" Maple N31E 9.7' "1/16S BT" ('74 wit)
6" Balsam S28E 22.7' "S8 NBT"	5" Maple N16W 9.6' do do
7" W.Birch S30W 15.5' "S7 NBT"	8" Maple S65E 26.1' do
Squared cedar post 2' southerly.	3" Maple S33W 20.9' do
Bearings are magnetic. Distances to notch in lower blaze.	Bearings are magnetic. Distances to notch in lower blaze.



Signed by Stephan J. Szyszkoski
 Surveyor's Michigan License No. 33986

Date 10/31/01

For the Michigan Department of Natural Resources - Office of Property Management