

LAND CORNER RECORDATION CERTIFICATE
Filing Requirement of Act 74, Mich. P.A. 1970

For corners in

<u>Iron</u> (County)	Located In:	Corner Code #	
1. Public Land Survey	T <u>43N</u> R <u>33W</u>	<u>C5</u>	
	T _____ R _____	_____	
	T _____ R _____	_____	
	T _____ R _____	_____	
2. Property Controlling in Section	S <u>8</u> T <u>43N</u> R <u>33W</u>	<u>15</u>	
	S _____ T _____ R _____	_____	
3. Miscellaneous Property in Sec.	S _____ T _____ R _____	_____	
	S _____ T _____ R _____	_____	

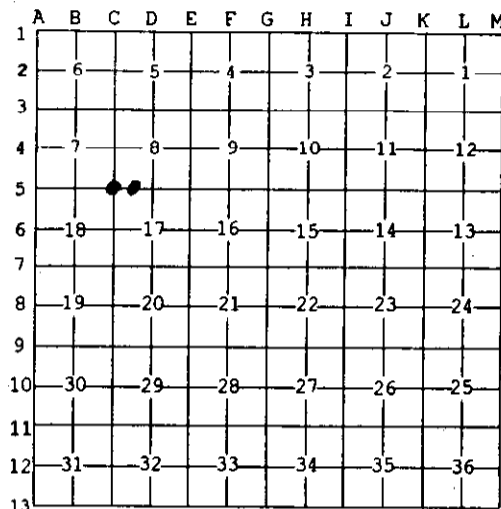
Register of Deeds Stamp & File Number

4. Lot No. _____, Recorded Plat _____
 5. Private Claims _____

Mar 27 2003

I, Stephan J. Szyszkoski, in a field survey on _____, 20____ do hereby state that under requirements of P.A. 74, Michigan P.A. of 1970, the corner points mentioned in lines 1 and 2 above were in conformance with regulations and rules therefore as required in the current manual of survey instructions of the United States Department of the Interior, Bureau of Land Management or by a decree of a Court of Law and /or that the corner points mentioned in lines 3, 4 and 5 above were in conformance with the rules of the Michigan Board of Land Surveyors or by a Decree of a Court of Law; established, re-established, monumented, recovered, found as expressed below:

NOTE: Not more than 2 corners, all in the same town and range, may be recorded on this certificate.



A. Description of original monument and accessories and/or subsequent restoration:
 (C5) Corner common to Sections 7-8-17-18. 1974: Reestablished by A.O. Enger RLS at the proportionate position between Section corners 1 mi. N and S. Set 1"IDx36" iron pipe with 3.5" aluminum cap. 18" Sugar Maple S75E 14.7', 10" Sugar Maple S35W 36.6', 10" Basswood N31W 13.7'.
 (15-Sec. 8) West 1/16 corner between Sections 8 and 17. Established by A.O. Enger in 1974 midway between Section and Quarter corners. 1"IDx36" iron pipe with 3.5" aluminum cap. W.Spruce 18 N08E 23.9', W.Spruce 14 S30E 8.7'.

B. Description of corner evidence found and/or method applied in restoring or reestablishing corner:

(C5) Recovered the 1974 monument, leaning slightly to the SW and with a broken cap. Plumbed the monument to vertical and in accord with the stump remains of the Sugar S75E NBT and installed a new 4" dia. alum. cap. The other two NBTs have been destroyed by road construction. Checked the distance north to Sec. corner and found it to be 80.204 ch. (80.242 ch. 1974 meas.).
 (15-Sec. 8) Recovered the 1974 monument, leaning slightly to the SW. Plumbed the monument to vertical and in accord with the remaining NBT W.Spruce S30E. The monument falls on the steep slope of a hillside with a vertical drop 1.5' SW of the corner. Erosion of the hill has destroyed the other NBT. From the monument, I found the distance west to the Section corner to be 1317.50' and the distance east to 1/4 corner 1320.41'.

C. Description of monument for corner and accessories established to perpetuate locating the position of the corner:

(C5) Found 1"ID iron pipe and installed new 4" dia. alum. MDNR cap. Blazed, scribed, and set measuring nails in: 9" Sugar N46E 17.0' "S8 NBT" 8" Sugar S24E 44.35' "S17 NBT" 9" Sugar S64W 50.1' "S18 NBT" 10" Maple N60W 26.05' "S7 NBT" Set squared cedar post adjacent. Bearings are magnetic. Distances are to nail with plastic tag.	(15) Found 1"ID Iron pipe with 3.5" alum. State of MI cap. Blazed, scribed, and set measuring nails in: 7" Balsam N13W 8.45' "1/16S BT" 8" Spruce S72E 8.4' do 7" Cedar S30W 14.05' do 16" Spruce S30E 8.7' (estimated notch) The 16" Spruce is the 1974 NBT with overgrown blazes. Bearings are magnetic. Distances to 2003 NBTs are to nail with plastic tag.
---	---



Signed by Stephan J. Szyszkoski Date 4/3/2003
 Surveyor's Michigan License No. 33986