

1993

COMMISSION

LAND CORNER RECORDATION CERTIFICATE
Filing Requirement of Act 74, Mich. P.A. 1970

IRON COUNTY MICHIGAN
RECEIVED FOR RECORD

93 DEC 29 PM 2:19
L.C. RECORDS L.C. P.282

Gilbert Stiles
REGISTER OF DEEDS

For corners in

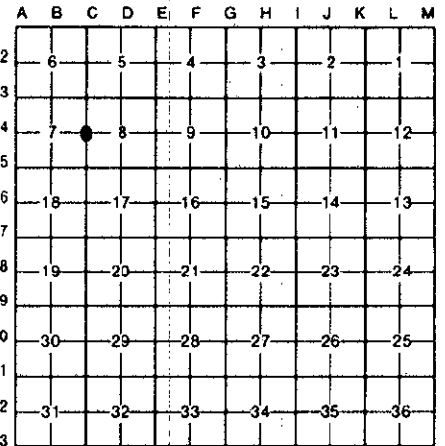
Iron (County)	Located In:	Corner Code #
1. Public Land Survey	T <u>43N</u> R <u>34W</u>	<u>C-4</u>
	T _____ R _____	_____
	T _____ R _____	_____
	T _____ R _____	_____
2. Property Controlling in Section	S _____ T _____ R _____	_____
	S _____ T _____ R _____	_____
3. Miscellaneous Property in Sec.	S _____ T _____ R _____	_____
	S _____ T _____ R _____	_____

Register of Deeds Stamp & File Number

- 4. Lot No. _____, Recorded Plat _____
- 5. Private Claims _____

Quarter Corner 7-8 T43N R34W

I, Gary L. Pisoni, in a field survey on December 17, 19 93, do hereby certify that under requirements of P.A. 74, Michigan P.A. of 1970, the corner points mentioned in lines 1 and 2 above were in conformance with regulations and rules therefore as required in the current manual of survey instructions of the United States Department of the Interior, Bureau of Land Management or by a decree of a Court of Law and/or that the corner points mentioned in lines 3, 4 and 5 above were in conformance with the rules of the Michigan Board of Land Surveyors or by a Decree of a Court of Law; established, re-established, monumented, re-monumented, recovered, found as expressed below:



NOTE: Not more than 4 corners, all in the same town and range, may be recorded on this certificate.

A. Description of original monument and accessories and/or subsequent restoration:

Original corner established by Guy H. Carleton, U.S. Deputy Surveyor on September 7, 1851.
 Original corner: Wood Post
 Original bearing trees:

Cedar	9"	N 60°W	13 links (8.58 feet)
Cedar	10"	S 25°E	30 links (19.80 feet)

B. Description of corner evidence found and/or method applied in restoring or reestablishing corner:

No evidence of original corner or bearing tree remains. Corner position found marked by a 1 1/2" X 26" iron pipe. Iron pipe being part of the Trybom Plat of Sunset Lake. Set an aluminum pipe monument over the top of iron pipe as described below. Monument is 3" above ground surface.

Monument located on the South side of North Trybom Drive.

This corner is accepted as the best available evidence of the position of the original corner.

C. Description of monument for corner and accessories established to perpetuate locating the position of the corner:

At the corner position, I set a 2" diameter by 30" long split base aluminum pipe monument with a 3" cast aluminum cap, stamped to read: Iron County Remonumentation, T43N, R34W, 1/4, S-7, S-8, 1993, R.L.S. 27457; from which I established the following new blazed and scribed bearing trees: (all measurements taken to a nail in side of tree)

Power Pole		N 11°E	45.12 feet
Cedar	11"	N 54°E	73.37 feet
Balsam	6"	S 46°W	52.43 feet
Spruce	19"	S 75°W	37.45 feet
Steel sign post		North	0.65 feet

Signed by Gary L. Pisoni

Date 12-28-93

Surveyor's Michigan License No. 27457

