

REMONUMENTATION

FEB 22 1996

COMMISSION

LAND CORNER RECORDATION CERTIFICATE
Filing Requirement of Act 74, Mich. P.A. 1970

IRON COUNTY
MICHIGAN
RECEIVED FOR RECORD

93 DEC 29 PH 3: 54
L.C. RECORDS L.6 P. 309

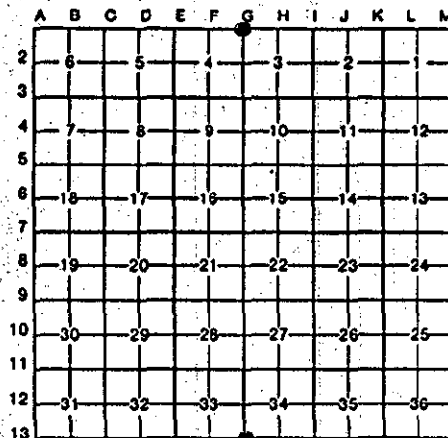
Gilbert Stiles
REGISTER OF DEEDS

For corners in

<u>Iron</u> (County)	Located In:	Corner Code #
1. Public Land Survey	T 43N R 34W	G-13
	T 42N R 34W	G-1
	T _____ R _____	_____
	T _____ R _____	_____
2. Property Controlling in Section	S _____ T _____ R _____	_____
	S _____ T _____ R _____	_____
3. Miscellaneous Property in Sec.	S _____ T _____ R _____	_____
	S _____ T _____ R _____	_____

Register of Deeds Stamp & File Number

4. Lot No. _____, Recorded Plat _____
5. Private Claims _____



Section Corner 33-34-4-3 T43N T42N R34W

I, Gary L. Pisoni, in a field survey on December 20, 19 93, do hereby certify that under requirements of P.A. 74, Michigan P.A. of 1970, the corner points mentioned in lines 1 and 2 above were in conformance with regulations and rules therefore as required in the current manual of survey instructions of the United States Department of the Interior, Bureau of Land Management or by a decree of a Court of Law and/or that the corner points mentioned in lines 3, 4 and 5 above were in conformance with the rules of the Michigan Board of Land Surveyors or by a Decree of a Court of Law; established, re-established, monumented, re-monumented, recovered, found as expressed below:

NOTE: Not more than 4 corners, all in the same town and range, may be recorded on this certificate.

A. Description of original monument and accessories and/or subsequent restoration:

Original corner established by Willaim Burt, U.S. Deputy Surveyor on September 8, 1846.

Original corner: Ironwood Post

Original bearing trees:

Sugar Maple	8"	N 76° E	18 links (11.88 feet)
Lynn	12"	N 18° W	15 links (9.90 feet)
Sugar Maple	16"	S 60° E	16 links (10.56 feet)
Sugar Maple	10"	S 15° W	55 links (36.30 feet)

B. Description of corner evidence found and/or method applied in restoring or reestablishing corner:

No evidence of original corner or bearing tree remains. Corner position found marked by a 1 1/4" x 30" iron pipe. Corner position has been used and accepted locally, for many years. Set an aluminum pipe monument and placed iron pipe next to monument as described below. Monument is 8" above ground surface.

This corner is accepted as the best available evidence of the position of the original corner.

C. Description of monument for corner and accessories established to perpetuate locating the position of the corner:

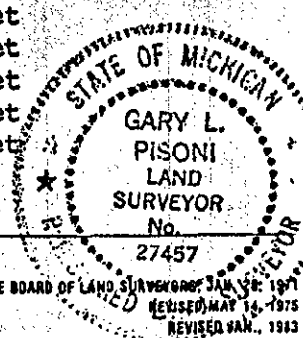
At the corner position, I set a 2" diameter by 30" long split base aluminum pipe monument with a 3" cast aluminum cap, stamped to read: Iron County Remonumentation, T43N, R34W, S-33, S-34, S-4, S-3, T42N, 1993, RLS-27457 from which I established the following new blazed and scribed bearing tree: (all measurements taken to a nail in side of tree)

Sugar Maple	6"	N 16° W	31.32 feet
Sugar Maple	8"	N 84° E	17.69 feet
Ash	8"	S 04° E	20.98 feet
Sugar Maple	12"	S 55° W	20.95 feet
Steel Sign Post		S 20° W	0.80 feet

Signed by Gary L. Pisoni

Date 12-28-93

Surveyor's Michigan License No. 27457



FORM APPROVED BY MICHIGAN STATE BOARD OF LAND SURVEYORS, JAN. 1971
REVISED MAY 16, 1975
REVISED JAN., 1983