

1993

COMMISSION

LAND CORNER RECORDATION CERTIFICATE
Filing Requirement of Act 74, Mich. P.A. 1970

IRON COUNTY
MICHIGAN
RECEIVED FOR RECORD

93 DEC 29 PM 2: 20
L.C. RECORDS L.6 P. 286

Gilbert Stebbins
REGISTER OF DEEDS

For corners in

Iron (County)	Located In:	Corner Code #
1. Public Land Survey	T 43N R 35W	K-7
	T _____ R _____	_____
	T _____ R _____	_____
	T _____ R _____	_____
2. Property Controlling in Section	S _____ T _____ R _____	_____
	S _____ T _____ R _____	_____
3. Miscellaneous Property in Sec.	S _____ T _____ R _____	_____
	S _____ T _____ R _____	_____

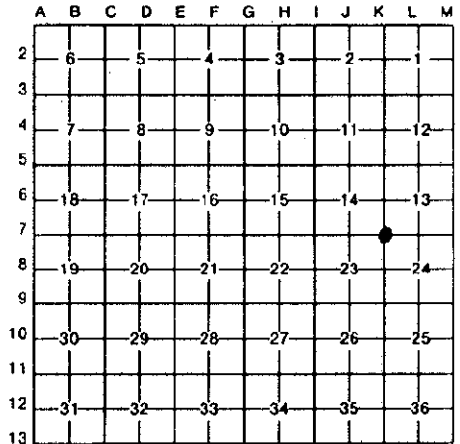
Register of Deeds Stamp & File Number

4. Lot No. _____, Recorded Plat _____
5. Private Claims _____

Section Corner 14-13-23-24 T43N R35W

I, Gary L. Pisoni, in a field survey on December 17, 19 93

do hereby certify that under requirements of P.A. 74, Michigan P.A. of 1970, the corner points mentioned in lines 1 and 2 above were in conformance with regulations and rules therefore as required in the current manual of survey instructions of the United States Department of the Interior, Bureau of Land Management or by a decree of a Court of Law and/or that the corner points mentioned in lines 3, 4 and 5 above were in conformance with the rules of the Michigan Board of Land Surveyors or by a Decree of a Court of Law; established, re-established, monumented, re-monumented, recovered, found as expressed below:



NOTE: Not more than 4 corners, all in the same town and range, may be recorded on this certificate.

A. Description of original monument and accessories and/or subsequent restoration:

Original corner established by Harvey Mellen, U.S. Deputy Surveyor on August 7, 1851.
Original corner: Wood Post
Original bearing trees:
Sugar Maple 14" N 48° W 18 links (11.88 feet)
Sugar Maple 9" S 20° E 15 links (9.90 feet)

B. Description of corner evidence found and/or method applied in restoring or reestablishing corner:

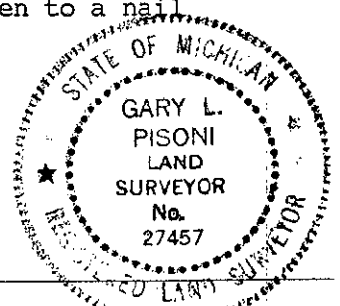
No evidence of original corner or bearing tree remains. Corner position found marked by a 1" diameter iron pin encased in concrete located on the East side of Iron Lake Road and North side of Sunset Lake Road. Said Monument set by the Iron Ore Mining Companies in the 1950's and now is frost heaved. Corner position has been used and accepted locally, for many years. Replaced concrete encased pin with an aluminum pipe monument as described below. Monument is 2" below ground surface.

This corner is accepted as the best available evidence of the position of the original corner.

C. Description of monument for corner and accessories established to perpetuate locating the position of the corner:

At the corner position, I set a 2" diameter by 30" long split base aluminum pipe monument with a 3" cast aluminum cap, stamped to read: Iron County Remonumentation, T43N, R35W, S-14, S-13, S-23, S-24, 1993, R.L.S. 27457; from which I established the following new blazed and scribed bearing trees: (all measurements taken to a nail in side of tree)

Elm	11"	N 86° E	77.72 feet
Sugar Maple	18"	N 84° W	57.87 feet
Sugar Maple	15"	N 19° W	100.91 feet
Concrete R.o.W marker		N 56° E	29.33 feet
Steel sign post		N 45° E	24.58 feet



Signed by Gary L. Pisoni

Date 12-28-93

Surveyor's Michigan License No. 27457