

MICHIGAN
DEPARTMENT OF CONSERVATION
FORESTRY DIVISION

LAND CORNER RECORD

T. 44-45 N.R. 31W

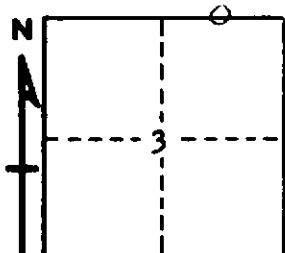
Iron COUNTY

DESCRIPTION OF CORNER East 1/16 corner between Sections 3 and 34

CORNER MONUMENT 1" I. D. x 36" iron pipe with 4" aluminum cap

DATE MONUMENT PLACED AND WITNESSED October 9, 1968

WITNESSES TO CORNER..... Sugar Maple 8 N32°E 18 lks. "1/16 S BT"



Sugar Maple 9 S69°E 28½ lks. "1/16 S BT"

AND

CIRCLE CORNER REGISTERED

DESCRIPTION IN DETAIL AS TO HOW CORNER WAS LOCATED AND IDENTIFIED OR RESTORED.

Corner established midway on line between Section Corner 20.11 chains East and 1/4 corner 20.11 chains West, previously established by proportionate measurements along the township line.

Found very old E and W line blazes on trees to west of corner. No evidence that this corner had been established prior to this date.

Variation at this corner is about 3° 00' East.

SURVEYOR'S SEAL

SIGNED

Arthur O. Enger
REGISTERED LAND SURVEYOR

DATE

2/14/69