

MICHIGAN
DEPARTMENT OF CONSERVATION
FORESTRY DIVISION

LAND CORNER RECORD

T. 44-45 N.R. 31W

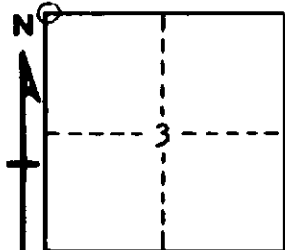
Iron COUNTY

DESCRIPTION OF CORNER Section Corner 3, 4, 33, and 34

CORNER MONUMENT 1" I.D. x 36" iron pipe with 4" aluminum cap

DATE MONUMENT PLACED AND WITNESSED October 9, 1968

WITNESSES TO CORNER..... Sugar Maple 22 N52 $\frac{1}{2}$ ^oW 45 $\frac{1}{2}$ lks. "S33 NBT"



Sugar Maple 18 N33 $\frac{1}{2}$ ^oE 32 lks. "S34 NBT"

Sugar Maple 15 S39 $\frac{1}{2}$ ^oE 65 lks. "S3 NBT"

AND

CIRCLE CORNER REGISTERED

DESCRIPTION IN DETAIL AS TO HOW CORNER WAS LOCATED AND IDENTIFIED OR RESTORED.

This monument placed at site of an old squared wood post, a 1 1/4" well point, and a 2"x2" white wood stake marked "Sec. Cor." No identifiable evidence of the original monument or its accessories, but the position checks well with record distance along the township boundary from original corners to east and west, and checks exactly with distances to a ridge top and brook a short distance west.

Corner is in a mature hardwood stand and was found by DNR survey crew doing retracement work in the vicinity. Old blazes on nearby trees indicate use for a long time.

Variation at this corner is about 8^o 30' West.

SURVEYOR'S SEAL

SIGNED

Arthur D. Enger
REGISTERED LAND SURVEYOR

DATE

2/14/69