

MICHIGAN  
DEPARTMENT OF CONSERVATION  
FORESTRY DIVISION

LAND CORNER RECORD

T. 44 N.R. 30-31 W

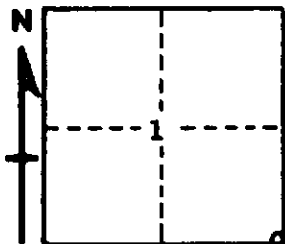
Iron - Dickinson COUNTY

DESCRIPTION OF CORNER Sec. Cor. common to Sec. 1, 12, 6 & 7

CORNER MONUMENT 1" iron pipe with 4" aluminum cap.

DATE MONUMENT PLACED AND WITNESSED 5/27/68

WITNESSES TO CORNER.....



CIRCLE CORNER REGISTERED

White Pine 12 S 19 E 23-1/2 lks. (S7 NBT)

White Pine 12 S 39 W 71-1/2 lks. (S12 NBT)

AND

DESCRIPTION IN DETAIL AS TO HOW CORNER WAS LOCATED AND IDENTIFIED OR RESTORED.

Corner replaced from stumps of two white pines believed to be original BT's. (W. Pine 22 N29E 13 lks. and W. Pine 30 N20W 25 lks.) Both stumps in poor condition, but possible trace of overgrowth where lower blaze should be is on stump to northeast. Stumps agree with original field notes in species, relative size, bearing, and distance. Distances to open swamp 75 links north and to top of ridge 7.50 chains south check almost exactly. Corner found by Engineering Division survey crew on 1/24/67 while making retracement survey of Iron-Dickinson county line.

SURVEYOR'S SEAL

SIGNED Arthur O. Enger DATE 6/27/68  
REGISTERED LAND SURVEYOR