

STATE OF MICHIGAN  
DEPARTMENT  
OF  
NATURAL RESOURCES  
LAND CORNER RECORD

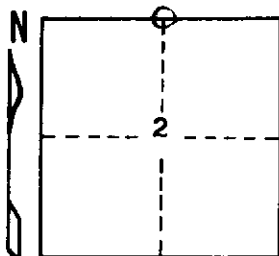
Iron COUNTY  
T 44-45 R 31W

DESCRIPTION OF CORNER 1/4 corner between Sections 2 and 35

CORNER MONUMENT 1" I.D. x 36" iron pipe with 4" aluminum cap

DATE MONUMENT PLACED AND WITNESSED October 8, 1968

WITNESSES TO CORNER..... Forked Bl. Spruce 7 S12°W 23 lks. "1/4 S NBT"



Bl. Spruce 6 N84°W 106 lks. "1/4 S NBT"

AND

CIRCLE CORNER REGISTERED

DESCRIPTION IN DETAIL AS TO HOW CORNER WAS LOCATED AND IDENTIFIED OR RESTORED.

Monument placed in a 22-inch W. Pine stump corresponding to description of original corner monument. This stump checks well with line and distances between known corners  $1\frac{1}{2}$  miles west and  $3\frac{1}{2}$  miles east and with a township corner  $1\frac{1}{2}$  miles east established by four-way proportionate measurement. No marks on stump and found no trace of an original hemlock B.T. Distance east to foot of a hill checks quite well.

Distance east to NE corner of Sec. 2 is 40,007 chains and west to NW corner of Sec. 2 is 40,007 chains.

SURVEYOR'S SEAL

DISTRIBUTION:

SIGNED

Arthur O. Enger  
REGISTERED LAND SURVEYOR

DATE

3/19/69

County Courthouse  
Area Forester (Regions I & II)  
District or Region Surveyor  
Forestry Div., Lansing

R 4047  
Rev. 10/68