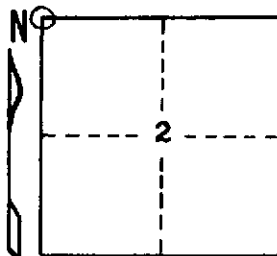


STATE OF MICHIGAN
DEPARTMENT
OF
NATURAL RESOURCES
LAND CORNER RECORD

Iron COUNTY
T 44-45N R 31W

DESCRIPTION OF CORNER Section Corner 2, 3, 34, and 35
CORNER MONUMENT 1" I.D. x 36" iron pipe with 4" aluminum cap
DATE MONUMENT PLACED AND WITNESSED October 8, 1968
WITNESSES TO CORNER..... White Spruce 5 S27°W 65½ lks. "S 3 NBT"



White Spruce 5 N88½°W 60½ lks. "S34 NBT"
Trembling Aspen 6 N43°E 27½ lks. "S35 NBT"
AND

CIRCLE CORNER REGISTERED

DESCRIPTION IN DETAIL AS TO HOW CORNER WAS LOCATED AND IDENTIFIED OR RESTORED.

Corner re-established 40.00 chains West of 1/4 corner between Sections 2 and 35, believed to be original, on line between that corner and a probable original Section Corner 80.46 chains West. Corner placed at 40.00 chains, rather than by proportionate measurement, in order to maintain consistency of measurement with the east half mile of the north side of Section 2. Due to the rough terrain and the crossing of the Fence River, it was considered that the overage in re-measurement as compared to the record measurement was most likely to have occurred on the north line of Section 3 rather than in Section 2.

No evidence of original monument or its accessories or of any replacement monument or its accessories. Measurements west of corner to a creek and to the Fence River and east to a swamp edge show reasonable agreement with original field notes.

SURVEYOR'S SEAL

SIGNED Arthur D. Enger DATE 3/19/69
REGISTERED LAND SURVEYOR

DISTRIBUTION:

County Courthouse
Area Forester (Regions I & II)
District or Region Surveyor
Forestry Div., Lansing

R 4047
Rev. 10/68