

STATE OF MICHIGAN  
DEPARTMENT  
OF  
NATURAL RESOURCES

LAND CORNER RECORD

Iron-Dickinson COUNTY

T 44N R 30-31W

DESCRIPTION OF CORNER Witness Corner for Section Corner 7, 12, 13, and 18

CORNER MONUMENT 1" I.D. x 36" iron pipe with 4" aluminum cap for a Witness Corner  
Cap stamped: WIT. COR. FOR

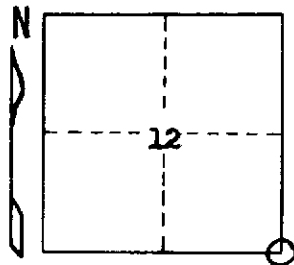
DATE MONUMENT PLACED AND WITNESSED September 3, 1969

12 | 7

13 | 18

WITNESSES TO CORNER..... W. Pine 23 N9°E 28½ lks. "WT, BT"

Cor. is NO 22°E  
3.50 Chains



W. Pine 17 N50°W 39 lks. "WT, BT"

T44N  
R31-30W

AND

CIRCLE CORNER REGISTERED

DESCRIPTION IN DETAIL AS TO HOW CORNER WAS LOCATED AND IDENTIFIED OR RESTORED.

Corner re-established by proportionate measurement on line between original section corners 79.89 ch. north and 239.67 ch. south. As corner is now in flooded area of a pond whose level has been artificially raised, it was not practical to mark the true corner position. Hence, a Witness Corner (described hereunder) was placed on the section line S0°22'W (bearing by solar observation) 3.50 ch. from the true corner.

Variation is about 0°20' East at this corner.

SURVEYOR'S SEAL

SIGNED

*Arthur O. Enger*  
REGISTERED LAND SURVEYOR

DATE

February 23, 1972

DISTRIBUTION:

Arthur O. Enger

County Courthouse  
Area Forester (Regions I & II)  
District or Region Surveyor  
Forestry Div., Lansing

R 4047  
Rev. 10/68