

STATE OF MICHIGAN
DEPARTMENT
OF
NATURAL RESOURCES

LAND CORNER RECORD

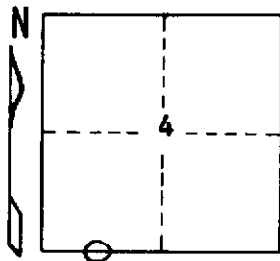
Iron COUNTY
T 44N R 31W

DESCRIPTION OF CORNER West 1/16 corner between Sections 4 and 9

CORNER MONUMENT 4" x 4" x 6½' squared cedar post, scribed "1/16, 4, 9"

DATE MONUMENT PLACED AND WITNESSED November 25, 1970

WITNESSES TO CORNER..... Cedar 8 N 2°E (mag.) 18.4 ft. "1/16S, BT"



Red Maple 8 N65°W (mag.) 37.3 ft. "1/16S, BT"

AND

CIRCLE CORNER REGISTERED

DESCRIPTION IN DETAIL AS TO HOW CORNER WAS LOCATED AND IDENTIFIED OR RESTORED.

Corner established on line between section corner 20.24 ch. W and 1/4 corner 20.24 ch. E. No evidence that the corner had been established previously.

SURVEYOR'S SEAL

DISTRIBUTION:

SIGNED

Arthur O. Enger
REGISTERED LAND SURVEYOR
Arthur O. Enger

DATE March 17, 1972

County Courthouse
Area Forester (Regions I & II)
District or Region Surveyor
Forestry Div., Lansing

R 4047
Rev. 10/68