

LAND CORNER RECORDATION CERTIFICATE
Filing Requirement of Act 74, Mich. P.A. 1970

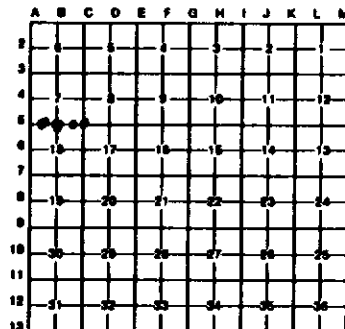
For corners in
Iron

	Located In:	Corner Code -#
1. Public Land Survey	T 44N R 31W	CS
	T _____ R _____	CS
	T _____ R _____	
	T _____ R _____	
2. Property Controlling in Section	S 18 T _____ R _____	1
	S _____ T _____ R _____	2
3. Miscellaneous Property in Sec.	S _____ T _____ R _____	

QW

Register of Deeds Stamp & File Number

4. Lot No. _____, Recorded Plat _____
 5. Private Claims _____



I, Keith Sackett, in a field survey on February 7, 19 87, do hereby certify that under requirements of P.A. 74, Michigan P.A. of 1970, the corner points mentioned in lines 1 and 2 above were in conformance with regulations and rules therefore as required in the current manual of survey instructions of the United States Department of the Interior, Bureau of Land Management or by a decree of a Court of Law and/or that the corner points mentioned in lines 3, 4 and 5 above were in conformance with the rules of the Michigan Board of Land Surveyors or by a Decree of a Court of Law, established, re-established, monumented, re-monumented, recovered, found as expressed below:

NOTE: Not more than 4 corners, all in the same town and range, may be recorded on this certificate.

A. Description of original monument and accessories and/or subsequent restoration:

CS	CS	1	2
Original monument and accessories not found.	Original monument and accessories not found. Found old scribed post and signature trees dating back over 30 years.	Not set on original survey nor subsequently, apparently.	Not set on original survey nor subsequently, apparently.

B. Description of corner evidence found and/or method applied in restoring or reestablishing corner:

CS	CS	1	2
Restored by proportion on line.	Restored corner at old scribed post.	Established by proportion on line.	Established midway on line.

C. Description of monument for corner and accessories established to perpetuate locating the position of the corner:

CS	CS	1	2
Set 1" I.P. by 3/4" I.P. w/4" aluminum cap. 8" sugar S66W 4.7' 1/168 NBT 6" sugar S55E 15.5' 1/48 NBT 14" hemlock N64E 16.2' 1/48 NBT	Set 1" I.P. by 3/4" I.P. w/4" aluminum cap. sq. post scribed old signature tree & Calcutas 5/22/57 inc. posted. 10" cedar S44E 16.1' S17 NBT 12" cedar N79E 18.9' S8 NBT 10" cedar N64W 30.7' S7 NBT	Set 1" I.P. by 3/4" I.P. with plastic cap. 7" sugar N73W 23.0' 1/168 BT 8" birch N91E 12.3' 1/168 BT 8" maple S11E 33.5' 1/168 BT	Set 1" I.P. by 3/4" I.P. w/4" aluminum cap. 8" sugar N05E 13.2' 1/168 BT 12" cedar N70W 24.0' 1/168 BT 6" sugar S76E 6.7' 1/168 BT 4" ironwood squared S40W 2.6'

Signed by Keith Sackett Date 2/17/87
 Surveyor's Michigan License No. 17906

FORM APPROVED BY MICHIGAN STATE BOARD OF LAND SURVEYORS, JAN. 20, 1971
 REVISED MAY 24, 1978
 REVISED JAN., 1982

