

LAND CORNER RECORDATION CERTIFICATE
Filing Requirement of Act 74, Mich. P.A. 1970

For corners in
Iron _____ Located in: _____ Corner Code # _____
(County)

1. Public Land Survey T 44N R 31W L5
T _____ R _____
T _____ R _____
T _____ R _____

2. Property Controlling S 25 T 44N R 31W 1
in Section S _____ T _____ R _____
S _____ T _____ R _____

3. Miscellaneous S _____ T _____ R _____
Property in Sec. S _____ T _____ R _____

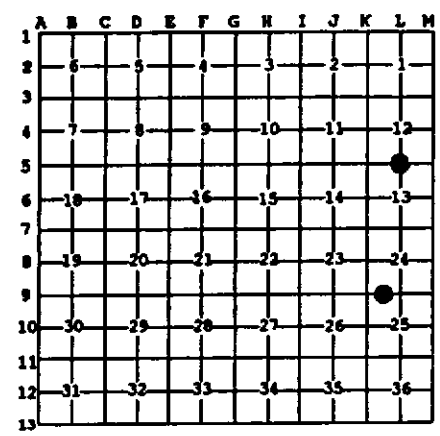
Register of Deeds Stamp & File Number

4. Lot No. _____, Recorded Plat _____
5. Private Claims _____

L5 Jun 24 1997
1 Jun 25 1997

I, Stephan J. Szyszkoski, in a field survey on _____, 19____ do hereby state that under requirements of P.A. 74, Michigan P.A. of 1970, the corner points mentioned in lines 1 and 2 above were in conformance with regulations and rules therefore as required in the current manual of survey instructions of the United States Department of the Interior, Bureau of Land Management or by a decree of a Court of Law and for that the corner points mentioned in lines 3, 4 and 5 above were in conformance with the rules of the Michigan Board of Land Surveyors or by a Decree of a Court of Law, established, re-established, monumented, recovered, found as expressed below:

NOTE: Not more than 2 corners, all in the same town and range, may be recorded on this certificate.



A. Description of original monument and accessories and/or subsequent restoration:
(L5) Quarter corner common to Sections 12-13. Corner established in 1849 by John Burt: "Set Maple Gr. Section Post. Fir 12 N30E 7, Sugar 14 S24W 7". Found no subsequent record.
(1-Sec. 25) West 1/16 corner between Sections 24-25. Corner not established in the original survey. Found no subsequent record.

B. Description of corner evidence found and/or method applied in restoring or reestablishing corner:

(L5) Original post and accessories not recovered. Found no evidence of the position of the original corner on the ground. Reestablished the corner midway and on a line of mean true bearing between monumented Section corners 2654.7 ft. East and West, being proportionate to the original record. At the position for the corner, I placed a 1" I.D. x 32" iron pipe capped with a 4" dia. cast aluminum NDNR tablet appropriately stamped. Corner placed and witnessed by D.Lampela and B.Wheeler, Baraga District Office, NDNR.
(1-Sec. 25) Found no evidence of prior monumentation at the corner position. Established the corner midway and on a line of mean true bearing between Section corner 1317.26' West and Quarter corner 1317.26' East. The Section corner West falls in the man-made Michigamme Reservoir. It's position was reestablished from a Wisconsin-Michigan Power Co. Witness monument on the west shore. At the position for the 1/16 corner, I placed a 1" I.D. x 32" iron pipe capped with a 4" dia. cast aluminum NDNR tablet, appropriately stamped. Corner placed and witnessed by D.Lampela and B.Wheeler, Baraga District Office, NDNR. The corner is located in an aspen cutting about 80' east of a trail road.

C. Description of monument for corner and accessories established to perpetuate locating the position of the corner:
(L5) Set 1" pipe with 4" NDNR cap. (1) Set 1" pipe with 4" NDNR cap.
Blazed and scribed the following: Blazed and scribed the following:
8" Sugar N10W 4.1' "1/4S NBT" 3" Maple N75E 20.0' "1/16S BT"
8" Sugar S24W 20.8' "1/4S NBT" 4" Maple S21E 29.0' "1/16S BT"
7" Sugar S43E 11.1' "1/4S NBT" 15" Spruce S53N 31.6' "1/16S BT"
7" Sugar N49E 13.5' "1/4S NBT" 15" Spruce N12W 34.9' "1/16S BT"
Bearings are magnetic. Squared a 3" aspen adjacent to the corner. Bearings are magnetic.



Signed by Stephan J. Szyszkoski Date Sept. 8, 1997
Surveyor's Michigan License No. 33986

For the Michigan Department of Natural Resources - Forest Management Division