

LAND CORNER RECORDATION CERTIFICATE
Filing Requirement of Act 74, Mich. P.A. 1970

For owners in

Iron	Located in:	Corner Code #
(County)		
1. Public Land Survey	T 44N R 31W	L9
	T R	
	T R	
	T R	
2. Property Controlling in Section	S 24 T 44N R 31W	1
	S T R	
3. Miscellaneous Property in Sec.	S T R	
	S T R	

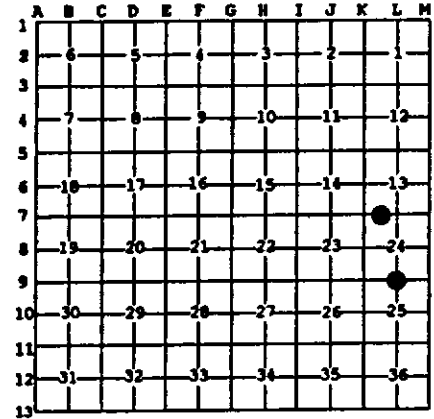
Register of Deeds Stamp & File Number

4. Lot No. _____, Recorded Plat _____
5. Private Claims _____

1 Jun 24 1997
L9 Jun 30 1997

I, Stephan J. Szyszkoski, in a field survey on _____, 19____ do hereby state that under requirements of P.A. 74, Michigan P.A. of 1970, the corner points mentioned in lines 1 and 2 above were in conformance with regulations and rules therefore as required in the current manual of survey instructions of the United States Department of the Interior, Bureau of Land Management or by a decree of a Court of Law and for that the corner points mentioned in lines 3, 4 and 5 above were in conformance with the rules of the Michigan Board of Land Surveyors or by a Decree of a Court of Law; established, re-established, monumented, recovered, found as expressed below.

NOTE: Not more than 2 corners, all in the same town and range, may be recorded on this certificate.



A. Description of original monument and accessories and/or subsequent restoration:
(L9) Quarter corner common to Sections 24-25. Corner established in 1849 by John Burt: "Set Cedar Br. Section post. Spruce 12 N6N 25, Sugar 8 S5N 22". Found no subsequent record.
(1-Sec. 24) West 1/16 between Sections 13-24. Corner not established in the original survey. Found no subsequent record.

B. Description of corner evidence found and/or method applied in restoring or reestablishing corner:

(L9) Original post and accessories not recovered. Found no acceptable evidence of the position of the original corner on the ground. Reestablished the corner midway and on a line of mean true bearing between Sections corners 2634.51' East and West. The Westerly Section Corner falls in the backwater of the Michigan Reservoir. It's position was determined from a Wisconsin-Michigan Power Company Witness Corner on the west shore. At the position of the Quarter corner, I placed a 1" I.D. x 32" iron pipe capped with a 4" cast aluminum NDNR tablet, appropriately stamped. Corner placed and witnessed by D.Lampela and B.Wheeler, Baraga District Office, NDNR.

(1-Sec. 24) Found no evidence of prior monumentation at the corner position. Established the corner midway and on a line of mean true bearing between Section corner 1322.9' West and Quarter corner 1322.9' East. At the position for the corner, I placed a 1" I.D. x 32" iron pipe capped with a 4" dia. cast aluminum NDNR tablet, appropriately stamped. The Corner lies 100 ft. east of a N'y-S'y trail road and on the north edge of an aspen cutting. Corner placed and witnessed by D.Lampela and B.Wheeler, Baraga District Office, NDNR.

C. Description of monument for corner and accessories established to perpetuate localing the position of the corner:

(L9) Set 1" pipe with 4" NDNR cap.
Blazed and scribed the following:
6" Aspen N55E 17.5' "1/4S NBT"
6" Aspen S07W 20.5' "1/4S NBT"
6" Ironwood S66W 12.5' "1/4S NBT"
7" Ironwood N15W 12.7' "1/4 S NBT"
Placed a squared aspen post adjacent.
Bearings are magnetic.

(1) Set 1" pipe with 4" NDNR cap.
Blazed and scribed the following:
5" Sugar S07E 21.2' "1/16S BT"
6" Triple Maple N11E 10.9' "1/16S BT"
5" Sugar N40W 12.2' "1/16S BT"
10" Sugar S40W 19.5' "1/16S BT"
Placed a squared maple post adjacent.
Bearings are magnetic.



Signed by Stephan J. Szyszkoski Date Sept. 8, 1997
Surveyor's Michigan License No. 33986

For the Michigan Department of Natural Resources - Forest Management Division