

STATE OF MICHIGAN
DEPARTMENT
OF
NATURAL RESOURCES

LAND CORNER RECORD

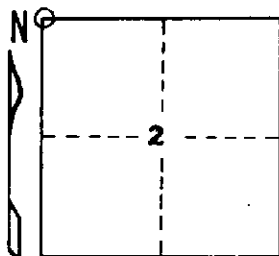
Iron COUNTY
T 44-45 N R 32 W

DESCRIPTION OF CORNER Section Corner 2, 3, 34, and 35

CORNER MONUMENT 1" I.D. x 36" iron pipe with 4" aluminum cap

DATE MONUMENT PLACED AND WITNESSED October 11, 1968

WITNESSES TO CORNER..... Red Maple 5 N53°W 35 lks. "S34 NBT"



Red Maple 5 S71°W 43 lks. "S 3 NBT"

Trembling Aspen 7 N60°E 29 lks. "S35 NBT"

AND

CIRCLE CORNER REGISTERED

DESCRIPTION IN DETAIL AS TO HOW CORNER WAS LOCATED AND IDENTIFIED OR RESTORED.

Corner set by proportionate measurement on line between an original section corner 79.99 chains west and a probable original section corner 79.99 chains east. Found no evidence of original corner monument or its accessories or of any replacement monument or accessories, but did find a 6-inch aspen blazed on four sides N53°W 64 links from the corner established here. Corner position checks well with a stream crossing mentioned in original field notes 9.75 chains to the east.

Variation at this corner is about 2° 00' West.

SURVEYOR'S SEAL

DISTRIBUTION:

SIGNED

Arthur O. Enger
REGISTERED LAND SURVEYOR

DATE

2/14/69

County Courthouse
Area Forester (Regions I & II)
District or Region Surveyor
Forestry Div., Lansing

R 4047
Rev. 10/68