

STATE OF MICHIGAN
DEPARTMENT
OF
NATURAL RESOURCES
LAND CORNER RECORD

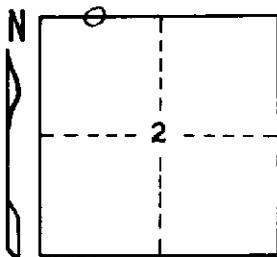
Iron COUNTY
T 44-45 N R 32 W

DESCRIPTION OF CORNER West 1/16 corner between Sections 2 and 35

CORNER MONUMENT 1" I.D. x 36" iron pipe with 4" aluminum cap

DATE MONUMENT PLACED AND WITNESSED October 11, 1968

WITNESSES TO CORNER..... White Spruce 6 S36¹/₂°W 18¹/₂ lks. "1/16 S BT"



White Spruce 6 N 35°W 25 lks. "1/16 S BT"

AND

CIRCLE CORNER REGISTERED

DESCRIPTION IN DETAIL AS TO HOW CORNER WAS LOCATED AND IDENTIFIED OR RESTORED.

Corner established midway on line between section corner about 20 chains west and 1/4 corner about 20 chains east. Found no evidence that a corner was ever established here previously.

Position checks well with swamp edge about 3 chains east mentioned in original field notes.

Variation at this corner is about 1°45' West.

SURVEYOR'S SEAL

DISTRIBUTION:

SIGNED Arthur O. Enger DATE 2/14/69
REGISTERED LAND SURVEYOR

County Courthouse
Area Forester (Regions I & II)
District or Region Surveyor
Forestry Div., Lansing

R 4047
Rev. 10/68