

MICHIGAN
DEPARTMENT OF CONSERVATION
FORESTRY DIVISION

LAND CORNER RECORD

T. 44-45 N.R. 32 W

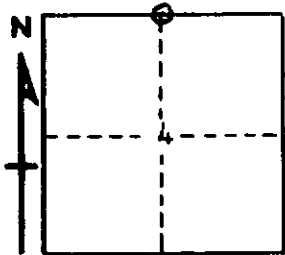
Iron COUNTY

DESCRIPTION OF CORNER ½ corner between Sec. 4 & 33

CORNER MONUMENT 1" I.D. by 36" iron pipe with 4" aluminum cap.

DATE MONUMENT PLACED AND WITNESSED August 13, 1968

WITNESSES TO CORNER..... Sugar Maple 6 S56E 14 lks. "½ S NBT"



Sugar Maple 12 N73W 28½ lks. "½ S NBT"

AND

CIRCLE CORNER REGISTERED

DESCRIPTION IN DETAIL AS TO HOW CORNER WAS LOCATED AND IDENTIFIED OR RESTORED.

Corner replaced midway on line between NW Sec. Cor. and NE Sec. Cor. (original evidence at both). No positive original evidence at this corner, but a long dead 14" hemlock with old blazes and notches on four sides bears N80E 21 lks. from where this corner was placed, showing evidence of use of the general locality as the corner.

Distance from this corner west to Sec. Cor. is 40.02 chains and east to Sec. Cor. is 40.02 chains.

Distances east and west to swamp edges called for in original field notes agree substantially with the location of this corner.

SURVEYOR'S SEAL

SIGNED

Arthur O. Enger
REGISTERED LAND SURVEYOR

DATE

9/4/68