

STATE OF MICHIGAN
DEPARTMENT
OF
NATURAL RESOURCES

LAND CORNER RECORD

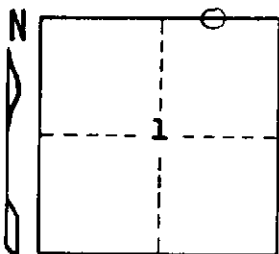
Iron COUNTY
T 44-45N R 32W

DESCRIPTION OF CORNER East 1/16 corner between Sections 1 and 36

CORNER MONUMENT 1" I.D. x 36" iron pipe with 4" aluminum cap

DATE MONUMENT PLACED AND WITNESSED November 25, 1968

WITNESSES TO CORNER..... Balsam 5 N68°E 8½ lks. "1/16 S BT"



Black Ash 6 S26°W 30 lks. "1/16 S BT"

AND

CIRCLE CORNER REGISTERED

DESCRIPTION IN DETAIL AS TO HOW CORNER WAS LOCATED AND IDENTIFIED OR RESTORED.

Corner established by proportionate measurement on line between township corner 20.023 chains east and 1/4 corner 20.023 chains west. No evidence that a corner had been established here previously.

Bearing of section line is about N89°00' W.

SURVEYOR'S SEAL

DISTRIBUTION:

SIGNED

Arthur O. Enger
REGISTERED LAND SURVEYOR

DATE

3/24/69

County Courthouse
Area Forester (Regions I & II)
District or Region Surveyor
Forestry Div., Lansing

R 4047
Rev. 10/68