

STATE OF MICHIGAN
DEPARTMENT
OF
NATURAL RESOURCES

LAND CORNER RECORD

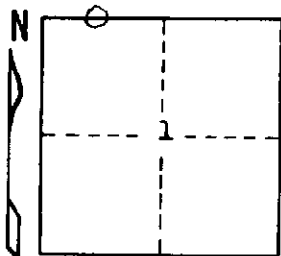
Iron COUNTY
T 44-45N R 32W

DESCRIPTION OF CORNER West 1/16 corner between Sections 1 and 36

CORNER MONUMENT 1" I.D. x 36" iron pipe with 4" aluminum cap

DATE MONUMENT PLACED AND WITNESSED November 25, 1968

WITNESSES TO CORNER..... Balsam Fir 10 S 52°W 3 lks. "1/16 S BT"



Balsam Fir 7 N84°E 12 lks. "1/16 S BT"

AND

CIRCLE CORNER REGISTERED

DESCRIPTION IN DETAIL AS TO HOW CORNER WAS LOCATED AND IDENTIFIED OR RESTORED.

Corner established by proportionate measurement on line between a probable original section corner 20.023 chains west and 1/4 corner 20.023 chains east. No evidence that a corner had been established here previously.

Bearing of section line is about N89°00'W.

SURVEYOR'S SEAL

DISTRIBUTION:

SIGNED

Arthur O. Enger
REGISTERED LAND SURVEYOR

DATE

3/29/69

County Courthouse
Area Forester (Regions I & II)
District or Region Surveyor
Forestry Div., Lansing

R 4047
Rev. 10/68