

STATE OF MICHIGAN
DEPARTMENT
OF
NATURAL RESOURCES

LAND CORNER RECORD

Iron COUNTY

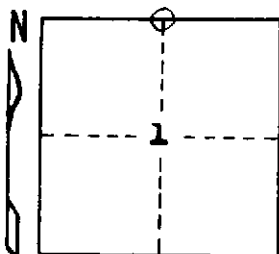
T 44-45N R 32W

DESCRIPTION OF CORNER 1/4 corner between Sections 1 & 36

CORNER MONUMENT 1" I.D. x 36" iron pipe with 4" aluminum cap

DATE MONUMENT PLACED AND WITNESSED November 25, 1968

WITNESSES TO CORNER..... Red Maple 12 N32°W 56½ lks. "1/4 S NBT"



Sugar Maple 8 N32°E 47 lks. "1/4 S NBT"

AND

CIRCLE CORNER REGISTERED

DESCRIPTION IN DETAIL AS TO HOW CORNER WAS LOCATED AND IDENTIFIED OR RESTORED.

Corner re-established by proportionate measurement on line between township corner 40.046 chains east and a probable original section corner 40.046 chains west. Found no evidence of the original post or its accessories or of any replacement monument or its accessories. Found a few old E & W line blazes on an old cutting line about 50 links south of corner.

The true bearing of this section line is about N89°00' W.

SURVEYOR'S SEAL

DISTRIBUTION:

SIGNED

Arthur O. Enger
REGISTERED LAND SURVEYOR

DATE

3/19/69

County Courthouse
Area Forester (Regions I & II)
District or Region Surveyor
Forestry Div., Lansing

R 4047
Rev. 10/68