

STATE OF MICHIGAN
DEPARTMENT
OF
NATURAL RESOURCES

LAND CORNER RECORD

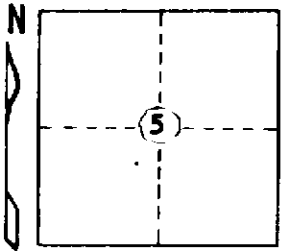
Iron COUNTY
T 44N R 32W

DESCRIPTION OF CORNER Center of Section 5

CORNER MONUMENT 1" I.D. x 36" iron pipe with 4" aluminum cap.

DATE MONUMENT PLACED AND WITNESSED March 13, 1972

WITNESSES TO CORNER..... Balsam 6 S40°W (mag.) 28.3 ft. "1/4S, NBT"



Balsam 4 N55°W (mag.) 14.0 ft. "1/4S, NBT"

AND

CIRCLE CORNER REGISTERED

DESCRIPTION IN DETAIL AS TO HOW CORNER WAS LOCATED AND IDENTIFIED OR RESTORED.

No evidence that the corner had been previously established. First measured all exterior lines of Sec. 5 and re-established the section and 1/4 section corners. Then established center of section on true N & S 1/4 line at calculated intersection with E & W 1/4 line.

Variation at this corner is 0°00'.

SURVEYOR'S SEAL

DISTRIBUTION:

Forestry Division, Lansing

District Forester

District Surveyor

SIGNED

Arthur O. Enger
REGISTERED LAND SURVEYOR
Arthur O. Enger

DATE June 27, 1972