

LAND CORNER RECORDATION CERTIFICATE
Filing Requirement of Act 74, Mich. P.A. 1970

For corners in
Iron

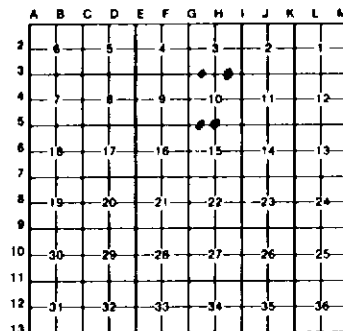
	(County)	Located In:	Corner Code -#
1. Public Land Survey		T 44N R 32W	HS
		T _____ R _____	_____
		T _____ R _____	_____
2. Property Controlling in Section	S 10	T _____ R _____	1
		S _____ T _____ R _____	2
3. Miscellaneous Property in Sec.		S _____ T _____ R _____	15

Register of Deeds Stamp & File Number

4. Lot No. _____, Recorded Plat _____
 5. Private Claims _____

I, Keith Sackett, in a field survey on April 24, 19 89, do hereby certify that under requirements of P.A. 74, Michigan P.A. of 1970, the corner points mentioned in lines 1 and 2 above were in conformance with regulations and rules therefore as required in the current manual of survey instructions of the United States Department of the Interior, Bureau of Land Management or by a decree of a Court of Law and/or that the corner points mentioned in lines 3, 4 and 5 above were in conformance with the rules of the Michigan Board of Land Surveyors or by a Decree of a Court of Law, established, re-established, monumented, re-monumented, recovered, found as expressed below

NOTE: Not more than 4 corners, all in the same town and range, may be recorded on this certificate.



A. Description of original monument and accessories and/or subsequent restoration:

HS	1	2	15
Original monument and accessories not found.	Not set on original survey nor subsequently, apparently.	Not set on original survey nor subsequently, apparently.	Not set on original survey nor subsequently, apparently.

B. Description of corner evidence found and/or method applied in restoring or reestablishing corner:

HS	1	2	15
Restored midway and on line.	Established midway and on line.	Established midway and on line.	Established midway and on line.

C. Description of monument for corner and accessories established to perpetuate locating the position of the corner:

HS	1	2	15
Set 1" I.D. by 3/8" I.P. with 4" aluminum cap.	Set 1" I.D. by 3/8" I.P. with 4" aluminum cap.	Set 1" I.D. by 3/8" I.P. with 4" aluminum cap.	Set 1" I.D. by 3/8" I.P. with 4" aluminum cap.
6" white birch S27E 4.0' 1/4S, NBT with tag	16" cedar N79W 18.7' 1/16S, BT	5" sugar N83W 9.6' 1/16S, BT	5" spruce S62E 35.1' 1/16S, BT
10" white birch N15E 26.5' 1/4S, NBT	12" cedar S81W 32.5' 1/16S, BT	10" balsam N68E 28.6' 1/16S, BT	14" tamarack N82E 25.4' 1/16S, BT
8" balsam N66W 18.1' 1/4S, NBT	8" tamarack N85E 27.1' 1/16S, BT	7" balsam S14W 20.1' 1/16S, BT	S32E 8.1' tag
	5" cedar post 6' long	square 12" aspen S50E 4.5'	

Signed by Keith Sackett Date 5/12/89
 Surveyor's Michigan License No. 19004