

**LAND CORNER RECORDATION CERTIFICATE**  
**Filing Requirement of Act 74, Mich. P.A. 1970**

For corners in  
 1700

_____ (County)	Located In:	Corner Code #
1. Public Land Survey	T <u>44N</u> R <u>32W</u>	<u>64</u>
	T _____ R _____	<u>65</u>
	T _____ R _____	_____
	T _____ R _____	_____
2. Property Controlling in Section	S <u>10</u> T _____ R _____	<u>3</u>
	S _____ T _____ R _____	<u>16</u>
3. Miscellaneous Property in Sec.	S _____ T _____ R _____	_____
	S _____ T _____ R _____	_____

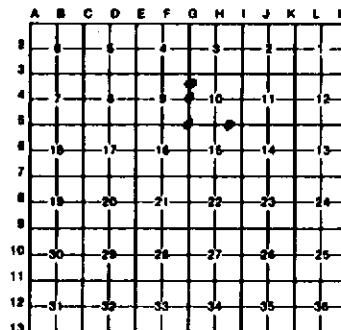
*90*

Register of Deeds Stamp & File Number

4. Lot No. \_\_\_\_\_, Recorded Plat \_\_\_\_\_  
 5. Private Claims \_\_\_\_\_

I, Keith Sackett, in a field survey on April 26, 19 89, do hereby certify that under requirements of P.A. 74, Michigan P.A. of 1970, the corner points mentioned in lines 1 and 2 above were in conformance with regulations and rules therefore as required in the current manual of survey instructions of the United States Department of the Interior, Bureau of Land Management or by a decree of a Court of Law and/or that the corner points mentioned in lines 3, 4 and 5 above were in conformance with the rules of the Michigan Board of Land Surveyors or by a Decree of a Court of Law; established, re-established, monumented, re-monumented, recovered, found as expressed below:

NOTE: Not more than 4 corners, all in the same town and range, may be recorded on this certificate.



A. Description of original monument and accessories and/or subsequent restoration:

<u>64</u>	<u>65</u>	<u>3</u>	<u>16</u>
Original monument and accessories not found.	Original monument and accessories not found. Found iron pipe in place. Pipe position agrees with other corners and land calls.	Not set on original survey nor subsequently, apparently.	Not set on original survey nor subsequently, apparently.

B. Description of corner evidence found and/or method applied in restoring or reestablishing corner:

<u>64</u>	<u>65</u>	<u>3</u>	<u>16</u>
Restored midway and on line.	Restored at iron pipe. 2" I.P.-4.5' out of ground.	Established midway and on line.	Established midway and on line.

C. Description of monument for corner and accessories established to perpetuate locating the position of the corner:

Set 1" I.B. by 3/4" I.P. with 4" aluminum cap.	2" I.P., 4.5' out of ground.	Set 1" I.B. by 3/4" I.P. with 4" aluminum cap.	Set 1" I.B. by 3/4" I.P. with 4" aluminum cap.
12" cedar N57W 38.3' 1/48, NBT	5" sugar 819E 14.7' 815, NBT	6" tamarack 845W 57.6' 1/168, BT	14" spruce N23W 28.2' 1/168, BT
8" sugar N82E 14.8' 1/48, NBT	7" sugar 855W 5.0' 816, NBT	BT	16" tamarack N78E 36.2' 1/168, BT
5" sugar 806N 13.0' 1/48, NBT	3" sugar N40W 3.3' 89, NBT		8" aspen 829N 15.0' 1/168, BT

Signed by Keith Sackett Date 5/11/89  
 Surveyor's Michigan License No. 19006

FORM APPROVED BY MICHIGAN STATE BOARD OF LAND SURVEYORS, JAN. 26, 1971  
 REVISED MAY 14, 1975  
 REVISED JAN., 1983