

**SURVEY & REMONUMENTATION**

**JAN 13 1998**

**SECTION**

IRON COUNTY  
MICHIGAN  
RECEIVED FOR RECORD

97 DEC 23 PM 1:28  
L.C. Records L.P. 147

**LAND CORNER RECORDATION CERTIFICATE**  
Filing Requirement of Act 74, Mich. P.A. 1970

*Gary E. Pisoni*  
REGISTER OF DEEDS

for corners in

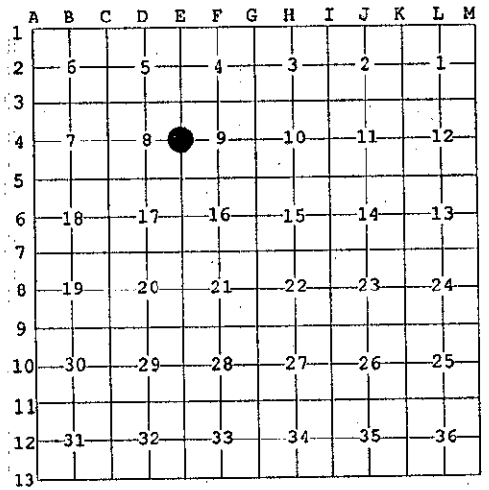
<u>Iron</u> (County)	Located In:	Corner Code #
1. Public Land Survey	T <u>44N</u> R <u>32W</u>	<u>E-4</u>
	T _____ R _____	_____
	T _____ R _____	_____
	T _____ R _____	_____
2. Property Controlling in Section	S _____ T _____ R _____	_____
	S _____ T _____ R _____	_____
3. Miscellaneous Property in Sec.	S _____ T _____ R _____	_____
	S _____ T _____ R _____	_____

Register of Deeds Stamp & File Number

4. Lot No. \_\_\_\_\_, Recorded Plat \_\_\_\_\_  
5. Private Claims \_\_\_\_\_

Quarter Corner Sections 8 and 9, T44N, R32W

Gary L. Pisoni, in a field survey on November 14, 1997 do hereby state that under requirements of P.A. 74, Michigan P.A. of 1970, the corner points mentioned in lines 1 and 2 above were in conformance with regulations and rules therefore as required in the current manual of survey instructions of the United States Department of the Interior, Bureau of Land Management or by a decree of a Court of Law and/or that the corner points mentioned in lines 3, 4 and 5 above were in conformance with the rules of the Michigan Board of Land Surveyors or by a Decree of a Court of Law; established, re-established, monumented, recovered, found as expressed below:



NOTE: Not more than 2 corners, all in the same town and range, may be recorded on this certificate.

**PEER GROUP APPROVED**  
*Gary L. Pisoni 12-1-97*  
IRON COUNTY REPRESENTATIVE

A. Description of original monument and accessories and/or subsequent restoration:

Original corner established in 1849 by Zelotes B. Searls, U.S. Deputy Surveyor.

Original Corner; Wood Post

Original Bearing Trees;	Yellow Birch	10"	S50° E	8 lks.(5.28 feet)
	Cedar	14"	N65° W	15 lks.(9.90 feet)

B. Description of corner evidence found and/or method applied in restoring or reestablishing corner:

No original corner evidence was recovered.

I restored the corner position by single proportionate measurement and on line between the Northeast and Southeast Section Corners of Section 8.

Corner record research on file with County Representative.

C. Description of monument for corner and accessories established to perpetuate locating the position of the corner:

At the corner position, set a 3/4 inch outside diameter aluminum rod monument, 4 feet long, 3 inches above the ground surface, with a 3 inch diameter aluminum cap stamped as follows; Iron County Remonumentation, T44N, R32W, 1/4, S8, S9, 1997, RLS 27457. Blazed and scribed the following new bearing trees;(Measurements are taken to a nail in side of tree)

White Spruce	10"	N35° W	18.12 feet
White Spruce	10"	N42° E	22.35 feet
White Spruce	10"	S88° E	21.05 feet
White Spruce	10"	S24° W	25.97 feet
Wood Post	3" dia.	N 60° 02' 22" E	15.91 feet
Steel Sign Post		North	0.60 feet

97-42  
Signed by Gary L. Pisoni Date November 29, 1997  
Surveyor's Michigan License No. 27457

FORM APPROVED BY MICHIGAN STATE BOARD OF PROFESSIONAL SURVEYORS, JAN. 28, 1971

