

SURVEY & REMONUMENTATION

JAN 13 1998

SECTION

IRON COUNTY
MICHIGAN
RECEIVED FOR RECORD

97 DEC 23 PM 1:30
L.C. Records 27 P. 160

Gilbert J. Pisoni
REGISTERED RECORDS

LAND CORNER RECORDATION CERTIFICATE Filing Requirement of Act 74, Mich. P.A. 1970

For corners in

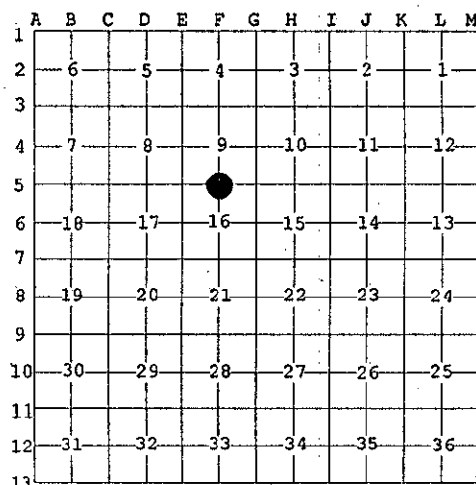
_____ Iron _____ (County)	Located In:	Corner Code #
1. Public Land Survey	T <u>44N</u> R <u>32W</u>	<u>F-5</u>
	T _____ R _____	_____
	T _____ R _____	_____
	T _____ R _____	_____
2. Property Controlling in Section	S _____ T _____ R _____	_____
	S _____ T _____ R _____	_____
3. Miscellaneous Property in Sec.	S _____ T _____ R _____	_____
	S _____ T _____ R _____	_____

Register of Deeds Stamp & File Number

4. Lot No. _____, Recorded Plat _____
5. Private Claims _____

Quarter Corner Between Sections 9 and 16, T44N, R32W

Gary L. Pisoni, in a field survey on December 2, 1997 do hereby state that under requirements of P.A. 74, Michigan P.A. of 1970, the corner points mentioned in lines 1 and 2 above were in conformance with regulations and rules therefore as required in the current manual of survey instructions of the United States Department of the Interior, Bureau of Land Management or by a decree of a Court of Law and /or that the corner points mentioned in lines 3, 4 and 5 above were in conformance with the rules of the Michigan Board of Land Surveyors or by a Decree of a Court of Law; established, re-established, monumented, recovered, found as expressed below:



NOTE: Not more than 2 corners, all in the same town and range, may be recorded on this certificate.

A. Description of original monument and accessories and/or subsequent restoration:

Original corner established in 1849 by Zelotes B. Searls, U.S. Deputy Surveyor.
Original Corner: Cedar Post
Original Bearing Trees:

Yellow Birch	18"	S 50° W	30 lks. (19.80 feet)
Fir	6"	N 70° E	15 lks. (9.90 feet)

PEER GROUP APPROVED

Gary L. Pisoni 12-19-97

IRON COUNTY REPRESENTATIVE

3. Description of corner evidence found and/or method applied in restoring or reestablishing corner:

No evidence of original B.T.s found.

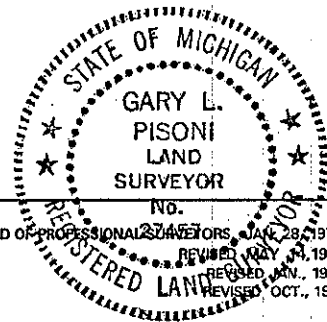
Set quarter corner by single proportionate measurement on line between the Northwest and Northeast Section corners of Section 16.

Corner record research on file with County Representative.

2. Description of monument for corner and accessories established to perpetuate locating the position of the corner:

At the corner position, set a 3/4" outside diameter aluminum rod monument, 4 feet long, 3" above the ground surface with a 3" dia. aluminum cap stamped as follows: Iron County Remonumentation, T44N, R32W, 1/4, S9, S16, 1997, RLS 27457. Blazed and scribed the following new bearing trees: (Measurements are taken to a nail in side of tree)

B. Spruce	8"	N 05° E	39.80 feet
Tamarack	7"	N 50° E	51.04 feet
B. Spruce	9"	S 60° E	22.55 feet
B. Spruce	5"	S 36° W	28.73 feet
Steel sign post		East	0.80 feet



17-31a
Signed by *Gary L. Pisoni* Date December 16, 1997
Surveyor's Michigan License No. 27457