

SURVEY & REMONUMENTATION

JAN 13 1998

SECTION

IRON COUNTY
MICHIGAN
RECEIVED FOR RECORD

97 DEC 23 PM 1:27
L.C. Records L7 P.135

LAND CORNER RECORDATION CERTIFICATE
Filing Requirement of Act 74, Mich. P.A. 1970

Gilbert S. Pisoni
REGISTER OF DEEDS

For corners in

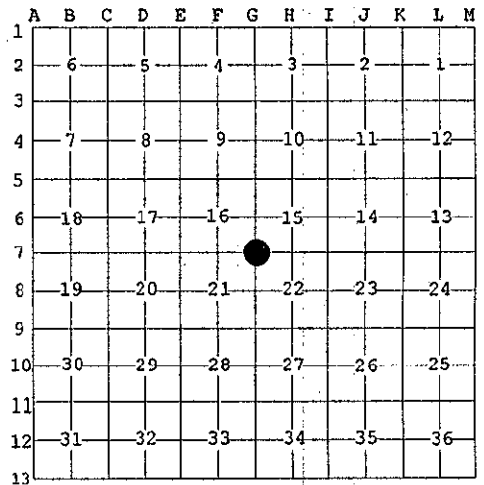
<u>Iron</u> (County)	Located In:	Corner Code #
1. Public Land Survey	<u>T 44N R 32W</u>	<u>G-7</u>
	T _____ R _____	_____
	T _____ R _____	_____
	T _____ R _____	_____
2. Property Controlling in Section	S _____ T _____ R _____	_____
	S _____ T _____ R _____	_____
3. Miscellaneous Property in Sec.	S _____ T _____ R _____	_____
	S _____ T _____ R _____	_____

Register of Deeds Stamp & File Number

4. Lot No. _____, Recorded Plat _____
5. Private Claims _____

Section Corner Common to Sections 15, 16, 21, 22, T44N, R32W

I, Gary L. Pisoni, in a field survey on November 7, 1997 do hereby state that under requirements of P.A. 74, Michigan P.A. of 1970, the corner points mentioned in lines 1 and 2 above were in conformance with regulations and rules therefore as required in the current manual of survey instructions of the United States Department of the Interior, Bureau of Land Management or by a decree of a Court of Law and /or that the corner points mentioned in lines 3, 4 and 5 above were in conformance with the rules of the Michigan Board of Land Surveyors or by a Decree of a Court of Law; established, re-established, monumented, recovered, found as expressed below:



NOTE: Not more than 2 corners, all in the same town and range, may be recorded on this certificate.

A. Description of original monument and accessories and/or subsequent restoration:

Original corner established by Zelotes B. Searls, U.S. Deputy Surveyor, in July 1849.
Original corner: Sugar Post
Original bearing trees:

Yellow Birch	18"	S 65°W	15 links (9.90 feet)
Maple	18"	N 12°E	30 links (19.80 feet)

On 5/23/89, Keith L. Sachett, RLS, DNR, found a "T" iron marking corner position, corner fits reasonably good with other Section corners E-W-N-S, recorded in Land Corner Certificate L. 6, Page 227 on 9/12/90.
1989 Bearing Trees:

Poplar	9"	N 84° W	14.2 feet
Maple	6"	S 17° W	11.1 feet
Maple	5"	S 46° E	6.1 feet

PEER GROUP APPROVED
Gary L. Pisoni 11-11-97
IRON COUNTY REPRESENTATIVE

B. Description of corner evidence found and/or method applied in restoring or reestablishing corner:

No evidence of original B.T.s found.

On 11/7/97, found "T" iron marking corner position as described above and the following bearing trees by Keith Sachett:

Poplar	13"	N 89° W	14.53 feet
Maple	8"	S 16° W	11.49 feet
Maple	7"	S 50° E	6.26 feet

Accepted the "T" iron as the best available evidence for restoring corner position.

Corner record research on file with County Representative.

C. Description of monument for corner and accessories established to perpetuate locating the position of the corner:

Replace "T" iron and set a 3/4" outside diameter aluminum rod monument, 3 feet long, 2" above ground surface with a 3" dia. aluminum cap and stamped as follows: Iron County Remonumentation, T44N, R32W, S-16, S-15, S-21, S-22, 1997, R.L.S. 27457 from which I established the following blazed and scribed new bearing trees:
(measurements taken to a nail in side of tree)

Ironwood	6"	N 66°E	18.18 feet
Steel sign post	6'	N 80°E	0.47 feet

97-30
Signed by Gary L. Pisoni Date November 8, 1997

Surveyor's Michigan License No. 27457

FORM APPROVED BY MICHIGAN STATE BOARD OF PROFESSIONAL SURVEYORS, JAN. 28, 1985

