

LAND CORNER RECORDATION CERTIFICATE
Filing Requirement of Act 74, Mich. P.A. 1970

For corners in

| Iron _____ | Located In: | Corner Code # |
|---------------------------------------|---------------------------------------|---------------|
| (County) | | |
| 1. Public Land Survey | T ___ R ___ | _____ |
| | T ___ R ___ | _____ |
| | T ___ R ___ | _____ |
| | T ___ R ___ | _____ |
| 2. Property Controlling in Section | S <u>15</u> T <u>44N</u> R <u>32W</u> | <u>3</u> |
| 3. Miscellaneous Property in Sec. | S <u>9</u> T <u>44N</u> R <u>32W</u> | <u>5</u> |
| | S ___ T ___ R ___ | _____ |
| | S ___ T ___ R ___ | _____ |

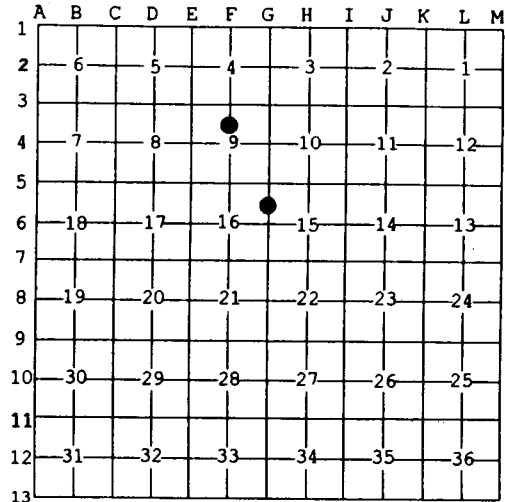
Register of Deeds Stamp & File Number

4. Lot No. _____, Recorded Plat _____
 5. Private Claims _____

5 Apr 17 2002
 3 Apr 16 2002

I, Stephan J. Szyszkoski, in a field survey on _____, 20____ do hereby state that under requirements of P.A. 74, Michigan P.A. of 1970, the corner points mentioned in lines 1 and 2 above were in conformance with regulations and rules therefore as required in the current manual of survey instructions of the United States Department of the Interior, Bureau of Land Management or by a decree of a Court of Law and /or that the corner points mentioned in lines 3, 4 and 5 above were in conformance with the rules of the Michigan Board of Land Surveyors or by a Decree of a Court of Law; established, re-established, monumented, recovered, found as expressed below:

NOTE: Not more than 2 corners, all in the same town and range, may be recorded on this certificate.



A. Description of original monument and accessories and/or subsequent restoration:
 (3-Sec. 15) North 1/16 corner between Sections 15 and 16. Not established in the original survey.
 (5-Sec. 9) North 1/16 corner, Section 9. Not established in the original survey.

B. Description of corner evidence found and/or method applied in restoring or reestablishing corner:
 (3-Sec. 15) Established the corner midway and on a line of mean true bearing between Section corner 1339.29' north and Quarter corner 1339.29' south.
 (5-Sec. 9) Established the corner midway and on a straight line between Quarter corner 1321.33' north and Center of Section (unmonumented) 1321.33' south.

C. Description of monument for corner and accessories established to perpetuate locating the position of the corner:

| | |
|--|--|
| (3) Set 1"IDx32" I.pipe with 4" alum. MDNR cap. Blazed and scribed: 7" Tamarack N22W 44.4' "1/16S BT" 3" W.Birch N32E 29.2' do 11" Balsam N84E 83.1' do 4" Cherry S66E 38.3' do Set squared tam. post adjacent. Bearings are magnetic. Distances are to notch in lower blaze. | (5) Set 1"IDx32" I.pipe with 4" alum. MDNR cap. Blazed and scribed: 6" Cedar N01E 37.5' "1/16S BT" 12" Cedar N62E 29.1' do 15" Cedar S60E 18.4' do 12" Cedar S75W 25.4' do Set squared cedar post adjacent. Bearings are magnetic. Distances are to notch in lower blaze. |
|--|--|



Signed by Stephan J. Szyszkoski
 Surveyor's Michigan License No. 33986

Date 6/10/02