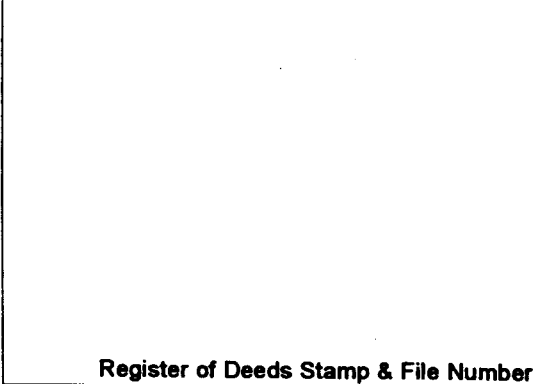


**LAND CORNER RECORDATION CERTIFICATE**  
**Filing Requirement of Act 74, Mich. P.A. 1970**

For corners in

Iron	Located In:	Corner Code #
(County)		
<b>1. Public Land Survey</b>	T <u>44N</u> R <u>32W</u>	<u>F3</u>
	T <u>44N</u> R <u>32W</u>	<u>G3</u>
	T _____ R _____	_____
	T _____ R _____	_____
<b>2. Property Controlling in Section</b>	S _____ T _____ R _____	_____
	S _____ T _____ R _____	_____
<b>3. Miscellaneous Property in Sec.</b>	S _____ T _____ R _____	_____
	S _____ T _____ R _____	_____

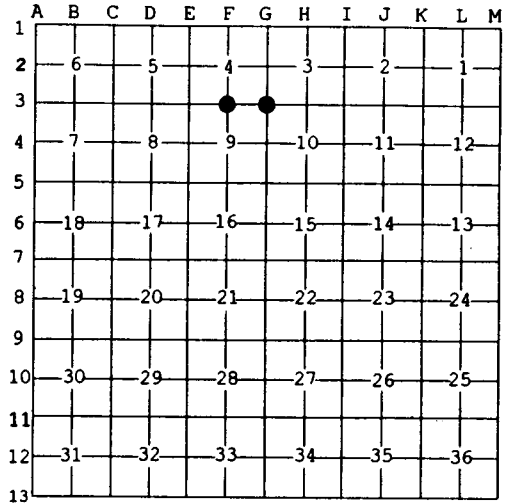


4. Lot No. \_\_\_\_\_, Recorded Plat \_\_\_\_\_  
 5. Private Claims \_\_\_\_\_

Apr 16 2002

I, Stephan J. Szyszkoski, in a field survey on \_\_\_\_\_, 20\_\_ do hereby state that under requirements of P.A. 74, Michigan P.A. of 1970, the corner points mentioned in lines 1 and 2 above were in conformance with regulations and rules therefore as required in the current manual of survey instructions of the United States Department of the Interior, Bureau of Land Management or by a decree of a Court of Law and/or that the corner points mentioned in lines 3, 4 and 5 above were in conformance with the rules of the Michigan Board of Land Surveyors or by a Decree of a Court of Law; established, re-established, monumented, recovered, found as expressed below:

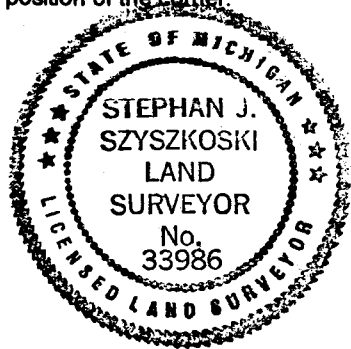
**NOTE:** Not more than 2 corners, all in the same town and range, may be recorded on this certificate.



**A. Description of original monument and accessories and/or subsequent restoration:**  
 (F3) Quarter corner common to Sections 4 and 9. 1849: Established by Z.B.Searles. "West corrected...40.25 Set Maple post Qr. Sect. Corner. Fir 8 S22W 7, Cedar 10 N10W 26...80.50 Section corner.  
 (G3) Section corner common to Sections 3-4-9-10. This corner was reestablished in 1989 by K.L.Sackett, RLS. The corner falls in a beaver pond and was not monumented in the 1989 survey. That position was used in 1989 to reestablish quarter corners east and south and to monument the North 1/16 between 9 and 10, and the West 1/16 between 3 and 10.

**B. Description of corner evidence found and/or method applied in restoring or reestablishing corner:**  
 (F3) The original post and accessories were not recovered. Reestablished the corner on a line of mean true bearing between Section corners 2669.89' east and west. From a point S78E, 39 feet from the position thus established blue paint lines run to the south and to the east.  
 (G3) Reestablished the 1989 position by producing the west and north lines of Section 10, as monumented in 1989, to their intersection. The monuments used in this process were the 1989 N1/16 and 1/4 corners between 9 and 10, and the W1/16 and quarter corners between 3 & 10. The corner position was not monumented. Established a WITNESS CORNER to G3 on the west shore of the pond, on the section line, S89 deg. 38' 35"W (true bearing) 549.14' distant. From G3, the 1989 1/16 corners are 1320.34' southerly and 1311.08' easterly.

**C. Description of monument for corner and accessories established to perpetuate locating the position of the corner:**  
 (F3) Set 1"IDx32" I.pipe with 4" alum. MDNR cap. Blazed and scribed:  
 11" Sugar N04W 10.9'      "1/4S NBT"  
 13" Sugar N67E 25.6'      do  
 8" Sugar S16E 41.5'      do  
 5" Sugar S42W 8.8'      do  
 Set squared spruce post adjacent.  
 Bearings are magnetic. Distances are to notch in lower blaze.  
 (G3) Set 1"IDx32" I.pipe with 4" alum. MDNR cap 549.14' west of G3, on the section line, from which the following BTs are blazed and scribed:  
 13" Spruce N10E 24.4'      "WC BT"  
 5" Cherry S40E 16.3'      do  
 6" Maple S58W 28.3'      do  
 9" Maple S81W 41.6'      do  
 Set squared spruce post adjacent.  
 Bearings are magnetic. Distances to notch in lower blaze.



Signed by Stephan J. Szyszkoski Date 6/10/02  
 Surveyor's Michigan License No. 33986