

JAN 13 1998

LAND CORNER RECORDATION CERTIFICATE  
Filing Requirement of Act 74, Mich. P.A. 1970

IRON COUNTY  
MICHIGAN  
RECEIVED FOR RECORD

97 DEC 23 PM 1:28

L.C. Records 27 P. 141

*Gilbert Stebbins*  
REGISTER OF DEEDS

Register of Deeds Stamp & File Number

For corners in SECTION

Iron  
(County)

Located In:

Corner Code #

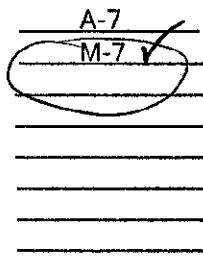
1. Public Land Survey

T 44N R 32W

T 44N R 33W

T R

T R



2. Property Controlling in Section

S T R

S T R

3. Miscellaneous Property in Sec.

S T R

S T R

4. Lot No. , Recorded Plat

5. Private Claims

Section Corner Sec. 18, 19, T44N, R32W

Section Corner Sec. 13, 24, T44N, R33W

I, Gary L. Pisoni, in a field survey on November 12, 1997 do hereby state that under requirements of P.A. 74, Michigan P.A. of 1970, the corner points mentioned in lines 1 and 2 above were in conformance with regulations and rules therefore as required in the current manual of survey instructions of the United States Department of the Interior, Bureau of Land Management or by a decree of a Court of Law and /or that the corner points mentioned in lines 3, 4 and 5 above were in conformance with the rules of the Michigan Board of Land Surveyors or by a Decree of a Court of Law; established, re-established, monumented, recovered, found as expressed below:

NOTE: Not more than 2 corners, all in the same town and range, may be recorded on this certificate.

PEER GROUP APPROVED  
*Gary L. Pisoni 12-1-97*  
IRON COUNTY REPRESENTATIVE

A. Description of original monument and accessories and/or subsequent restoration:

Original corner established in 1846 by Austin Burt, U.S. Deputy Surveyor.

Original Corner: Sugar Post

Original Bearing Trees: Y. Birch 12" S25° 30' E 33 lks.(21.78 feet)  
Y. Birch 16" N35° W 48 lks.(31.68 feet)

In 1849, Zelotes B. Searles, U.S. Deputy Surveyor, made a new bearing tree:

Cedar 20" N 80° E 34 lks. (22.44 feet)

B. Description of corner evidence found and/or method applied in restoring or reestablishing corner:

No original corner evidence was recovered.

Found a 1 inch diameter iron pipe, 42 inches long marking the corner position. I accept the iron pipe as the best available evidence for restoring the corner position.

Corner record research on file with County Representative.

C. Description of monument for corner and accessories established to perpetuate locating the position of the corner:

In place of iron pipe, set a 3/4 inch outside diameter aluminum rod monument, 3 feet long, 2 inches above ground surface, with a 3 inch diameter aluminum cap stamped as follows; Iron County Remonumentation, T44N, R33W, R32W, S13, S18, S24, S19, 1997, RLS 27457. Blazed and scribed the following new bearing trees: (Measurements are taken to a nail in side of tree)

White Ash 6" East 52.01 feet  
Red Maple 6" S85° W 55.62 feet  
Red Maple 12" S13° W 24.00 feet  
Red Maple 8" N35° W 54.72 feet  
Steel Sign Post North 1.01 feet

97-36  
Signed by *Gary L. Pisoni*

Date November 29, 1997

Surveyor's Michigan License No. 27457

