

LAND CORNER RECORDATION CERTIFICATE
Filing Requirement of Act 74, Mich. P.A. 1970

For corners in

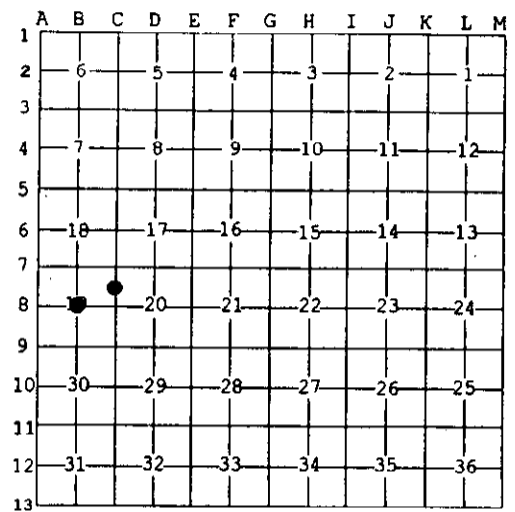
<u>Iron</u>	Located in:	Corner Code #	
<small>(County)</small>			
1. Public Land Survey	T <u>44N</u> R <u>33W</u>	<u>88</u>	
	T _____ R _____	_____	
	T _____ R _____	_____	
	T _____ R _____	_____	
2. Property Controlling in Section	S <u>19</u> T <u>44N</u> R <u>33W</u>	<u>7</u>	
	S _____ T _____ R _____	_____	
3. Miscellaneous Property in Sec.	S _____ T _____ R _____	_____	
	S _____ T _____ R _____	_____	

Register of Deeds Stamp & File Number

4. Lot No. _____, Recorded Plat _____
5. Private Claims _____

88 May 14 2003
7 May 12 2003

I, Stephan J. Szyszkoski, in a field survey on _____, 20__ do hereby state that under requirements of P.A. 74, Michigan P.A. of 1970, the corner points mentioned in lines 1 and 2 above were in conformance with regulations and rules therefore as required in the current manual of survey instructions of the United States Department of the Interior, Bureau of Land Management or by a decree of a Court of Law and/or that the corner points mentioned in lines 3, 4 and 5 above were in conformance with the rules of the Michigan Board of Land Surveyors or by a Decree of a Court of Law; established, re-established, monumented, recovered, found as expressed below:



NOTE: Not more than 2 corners, all in the same town and range, may be recorded on this certificate.

A. Description of original monument and accessories and/or subsequent restoration:
(88) Center of Section 19. Not established in the original survey.
(7-Sec. 19) North 1/16 corner between Sections 19 and 20. Recorded in 1980 by A.O. Enger: "Established 4/26/79 proportionately on line between Sec. Cor. 20.020 ch. N and lake edge on sec. line 8.91 +/- ch. S. (Not proportioned from M.C. monument, which is 8/ links N of lake edge)." 1"IDx36" iron pipe with 3 3/4" aluminum cap. Red Maple 6 S76W 5.1', Red Maple 4 N6W 14.3'."

B. Description of corner evidence found and/or method applied in restoring or reestablishing corner:
(88) Established the corner at the intersection of the N-S 1/4 line with a line passing through A8 and having a direction which is the mean of the bearings of the North and South lines of Section 19.
(7-Sec. 19) Found, but did not accept the 1979 monument. I found the long standing East line of Sec. 19 to be located about 50' west of this location, defined by old fencing, old cedar fence posts, the westerly extent of clearing and improvements made by adjoiners to the east, a 3/4" iron pipe some 200 ft. N, and the NE corner of Section 19. I destroyed the 1979 corner and reestablished the corner in said East line at its intersection with the E-W 1/16 line. The direction of the E-W 1/16 line is the mean of the directions of the E-W 1/4 line and the North line of the Section, conforming to the current BLM instructions for the subdivision of fractional sections.

C. Description of monument for corner and accessories established to perpetuate locating the position of the corner:
(88) Set 1"IDx32" I.pipe with 4" alum. MDNR cap. Blazed, scribed, and set measuring nails in:
13" Spruce N33W 30.6' "C1/4 BT"
10" R.Pine N20W 21.0' do
6" W.Pine S59E 45.6' do
4" Balsam S46W 16.8' do
Set sq'd cedar post adjacent. Bearings are magnetic. Distances are to nail with tag.
Stephan J. Szyszkoski
Signed by _____ Date 6/11/03
Surveyor's Michigan License No. 33986

