

LAND CORNER RECORDATION CERTIFICATE
Filing Requirement of Act 74, Mich. P.A. 1970

For corners in

Iron

(County)

Located In:

Corner Code #

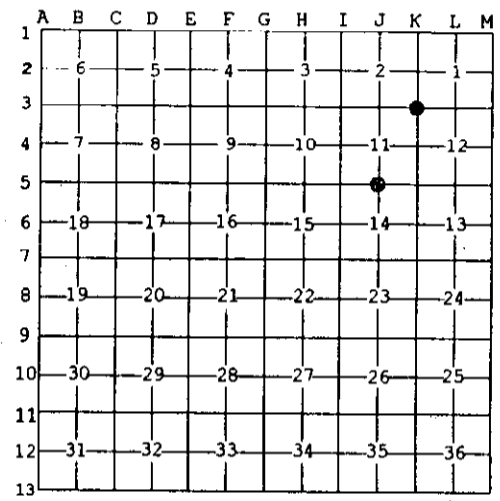
1. Public Land Survey	T <u>44N</u> R <u>34W</u>	K3
	T <u>44N</u> R <u>34W</u>	J5
	T _____ R _____	_____
	T _____ R _____	_____
2. Property Controlling in Section	S _____ T _____ R _____	_____
	S _____ T _____ R _____	_____
3. Miscellaneous Property in Sec.	S _____ T _____ R _____	_____
	S _____ T _____ R _____	_____

Register of Deeds Stamp & File Number

4. Lot No. _____, Recorded Plat _____
 5. Private Claims _____

J5 Jun 11 2003
 K3 Mar 31 2003

I, Stephan J. Szyszkoski, in a field survey on _____, 20____ do hereby state that under requirements of P.A. 74, Michigan P.A. of 1970, the corner points mentioned in lines 1 and 2 above were in conformance with regulations and rules therefore as required in the current manual of survey instructions of the United States Department of the Interior, Bureau of Land Management or by a decree of a Court of Law and /or that the corner points mentioned in lines 3, 4 and 5 above were in conformance with the rules of the Michigan Board of Land Surveyors or by a Decree of a Court of Law; established, re-established, monumented, recovered, found as expressed below:

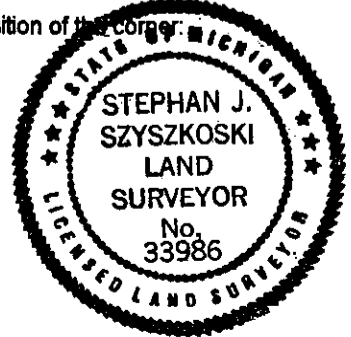


NOTE: Not more than 2 corners, all in the same town and range, may be recorded on this certificate.

A. Description of original monument and accessories and/or subsequent restoration:
 (K3) Corner common to Sections 1-2-11-12. 1976: Reestablished by A.O.Enger by double proportionate measurement between corners 1 mile North, South, and West, and road intersection 1 mile East. Set 1"IDx24" I.pipe with 3 3/4" aluminum cap, buried in the road. W.Birch 12 S88W 19.3', Red Maple 4 N71E 45.4', 8" gutter spike NO deg. 53.5' N 64.16'.
 (J5) Quarter corner between Sections 11 and 14. 1976: Reestablished midway and on line between Section corners by A.O.Enger RLS. 1"IDx39" Iron pipe with 3 3/4" aluminum cap. W.Pine Stump 30 N75E 46.0', Elm 10 S45W 54.1'.

B. Description of corner evidence found and/or method applied in restoring or reestablishing corner:
 (K3) Found a 5/8" rebar at the surface in the Westerly side of a N-S gravel road bed at record bearing and distance from the remaining 1976 accessories. The Maple is in good condition. the W.Birch is a dead stub with scribing and notch visible. The gutter spike was not recovered. Did not excavate to recover the 1976 monument, but accepted the 5/8" rebar as marking the 1976 position. Left the monument in place and made three new witnesses as described below.
 (J5) Recovered the 1976 monument leaning northerly. Plumbed the monument to vertical. The Pine Stump NBT is in place and checks. The Elm is dead and down. Verified the record position of the monument with respect to the adjacent section corners and made new witnesses as described below.

C. Description of monument for corner and accessories established to perpetuate locating the position of the corner:
 (K3) Found 5/8" dia. rebar. Blazed, scribed, and set measuring nails in:
 4" W.Spruce S24E 58.3' "S12 NBT"
 6" Aspen S50W 22.0' "S11 NBT"
 6" Cherry N83W 16.0' "S2 NBT"
 Bearings are magnetic. Distances are to nail with tag.
 (J5) Found 1"ID I.pipe with alum. MDNR cap. Blazed, scribed, and set measuring nails in:
 7" Maple N66E 9.5' "1/4S NBT"
 8" Maple S45E 29.0' do
 4" twin Maples S25E 21.5' do
 7" Aspen N32W 10.5' do
 Set squared spruce post adjacent.
 Bearings are magnetic. Distances are to nail with tag.



Signed by Stephan J. Szyszkoski Date 6/24/03
 Surveyor's Michigan License No. 33986