

FEB 23 1996

LAND CORNER RECORDATION CERTIFICATE
Filing Requirement of Act 74, Mich. P.A. 1970

For corners in

Iron
(County)

Located In:

Corner Code #

- 1. Public Land Survey T 43N R 35W
T 44N R 35W
T _____ R _____
T _____ R _____
- 2. Property Controlling in Section S _____ T _____ R _____
S _____ T _____ R _____
- 3. Miscellaneous Property in Sec. S _____ T _____ R _____
S _____ T _____ R _____

H-1
H-13 ✓

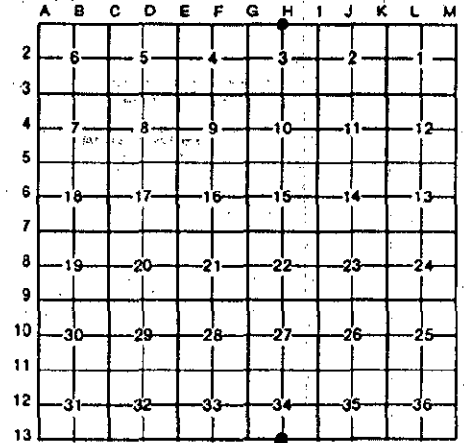
REGISTER'S OFFICE) SS
IRON COUNTY, MICH.) ..SS
RECEIVED FOR RECORD THE 21ST DAY OF
FEBRUARY A.D. 19 95 AT
2:45 O'CLOCK P.M. AND RECORDED IN LIBER
6 OF L.C. RECORDS
ON PAGE 355
Mark Soltes
DEPUTY REGISTER OF DEEDS

Register of Deeds Stamp & File Number

- 4. Lot No. _____, Recorded Plat _____
- 5. Private Claims _____

Quarter Corner 34, 3, T44N, R35W
T43N

I, Gary L. Pisoni in a field survey on September 13 19 94
do hereby certify that under requirements of P.A. 74, Michigan P.A. of 1970, the corner points mentioned
in lines 1 and 2 above were in conformance with regulations and rules therefore as required in the
current manual of survey instructions of the United States Department of the Interior, Bureau of Land
Management or by a decree of a Court of Law and/or that the corner points mentioned in lines 3, 4 and 5
above were in conformance with the rules of the Michigan Board of Land Surveyors or by a Decree of a
Court of Law; established, re-established, monumented, re-monumented, recovered, found as
expressed below:



NOTE: Not more than 4 corners, all in the same town and range, may be recorded on this certificate.

A. Description of original monument and accessories and/or subsequent restoration:

Original corner established by William A. Burt, U.S Deputy Surveyor in 1847.
Original corner: Fir Post
Original bearing trees:
Yellow Birch 18" N 31° E 59 links (38.94 feet)
Yellow Birch 12" N 42° W 36 links (23.76 feet)

B. Description of corner evidence found and/or method applied in restoring or reestablishing corner:

No evidence of original corner or bearing tree remains. Corner position found marked by a 5/8" x 17" rebar, set by Gerald W. Carlson RLS #24589 from a section sub-division of Section 3. Corner set by single proportionate measurement and on line between the Northwest and Northeast section corners of Section 3. Set an aluminum pipe monument over the top of rebar pin as described below. Monument is 3" above ground surface.

This corner is accepted as the best available evidence of the position of the original corner.

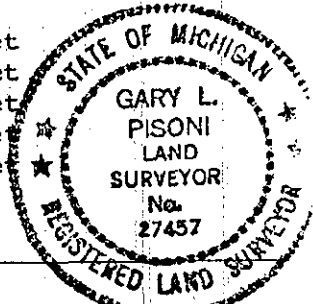
County Record Research on file with County Representatives Office.

PEER GROUP APPROVED
Iron Gary L. Pisoni
COUNTY REPRESENTATIVE
A.P. 11-30-94

C. Description of monument for corner and accessories established to perpetuate locating the position of the corner:

At the corner position, I set a 2" diameter by 30" long split base aluminum pipe monument with a 3" cast aluminum cap, stamped to read: Iron County Remonumentation, T44N, R35W, 1/4, S-34, S-3, T43N, 1994, RLS- 27457 from which I established the following new blazed and scribed bearing trees: (all measurements taken to a nail in side of tree)

Aspen (existing)	7"	S 82° W	44.70 feet
Aspen	8"	S 49° W	64.04 feet
Aspen	8"	S 67° W	65.10 feet
Aspen	6"	N 73° W	45.72 feet
Steel Sign Post		North	1.11 feet



Signed by Gary L. Pisoni

Date 1-9-95

Surveyor's Michigan License No. 27457