

SURVEY & REMONUMENTATION

JAN 12 1996

COMMISSION

LAND CORNER RECORDATION CERTIFICATE
Filing Requirement of Act 74, Mich. P.A. 1970

IRON COUNTY MICHIGAN
 RECEIVED FOR RECORD

95 DEC 15 PM 2:22
 LC Records 26, P.412

Gilbert Stiles
 REGISTER OF DEEDS

For corners in

Iron
 (County)

Located In: Corner Code #:

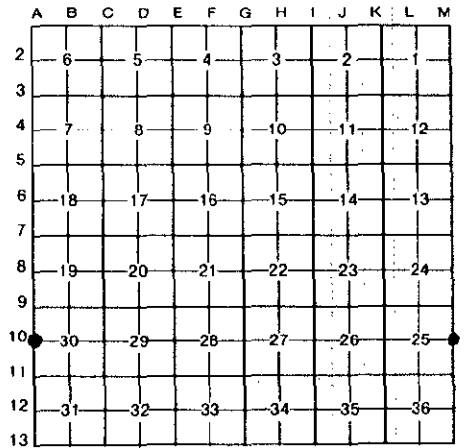
1. Public Land Survey	T 44N R 35W	M-10 ✓
	T 44N R 34W	A-10
	T _____ R _____	_____
	T _____ R _____	_____
2. Property Controlling in Section	S _____ T _____ R _____	_____
	S _____ T _____ R _____	_____
3. Miscellaneous Property in Sec.	S _____ T _____ R _____	_____
	S _____ T _____ R _____	_____

Register of Deeds Stamp & File Number

4. Lot No. _____, Recorded Plat _____
 5. Private Claims _____

Quarter Corner 25 & 30 T44N R35-34W

I, Gary L. Pisoni, in a field survey on October 16, 19 95, do hereby certify that under requirements of P.A. 74, Michigan P.A. of 1970, the corner points mentioned in lines 1 and 2 above were in conformance with regulations and rules therefore as required in the current manual of survey instructions of the United States Department of the Interior, Bureau of Land Management or by a decree of a Court of Law and/or that the corner points mentioned in lines 3, 4 and 5 above were in conformance with the rules of the Michigan Board of Land Surveyors or by a Decree of a Court of Law; established, re-established, monumented, re-monumented, recovered, found as expressed below:



NOTE: Not more than 4 corners, all in the same town and range, may be recorded on this certificate.

A. Description of original monument and accessories and/or subsequent restoration:

Original corner established by William A. Burt, U.S. Deputy Surveyor on September 15, 1846.
 Original corner: Cedar Post
 Original bearing trees:

Tamarack	8"	N 80° E	17 links (11.22 feet)
Tamarack	8"	N 80° W	42 links (27.72 feet)

B. Description of corner evidence found and/or method applied in restoring or reestablishing corner:

No original corner evidence found. Corner restored by single proportionate measurement methods on line between the Southeast corner of Section 36, T44N R35W and the Northeast corner of Section 24, T44N R35W. GLO distance and bearing check good along range line.

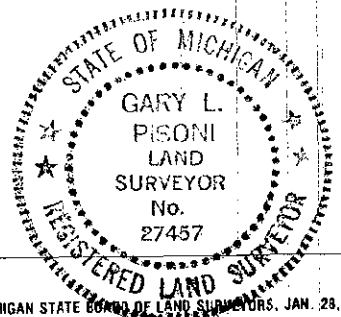
PEER GROUP APPROVED
Ron Gary L. Pisoni 12-14-95
 COUNTY REPRESENTATIVE

Research on file with County Representative.

C. Description of monument for corner and accessories established to perpetuate locating the position of the corner:

At the corner position, I set a 3/4" outside diameter by 4 feet long aluminum rod monument with a 3" cast aluminum cap, stamped to read: Iron County Remonumentation, T44N, R35W, 1/4, R34W, S-25, S-30, 1995, RLS-27457 from which I established the following new blazed and scribed bearing trees: (all measurements taken to a nail in side of tree)

Black Spruce	7"	N 10° E	2.80 feet
Black Spruce	7"	S 72° E	4.40 feet
Black Spruce	8"	South	32.65 feet
Black Spruce	7"	S 46° W	8.21 feet
Steel Sign Post		West	1.27 feet



Signed by Gary L. Pisoni

Date 11-30-95

Surveyor's Michigan License No. 27457