

MICHIGAN
DEPARTMENT OF CONSERVATION
FORESTRY DIVISION

LAND CORNER RECORD

T. 45-46 N.R. 31W

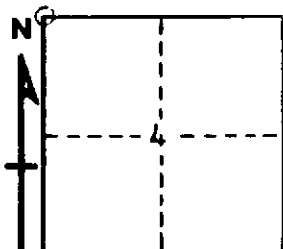
Iron COUNTY

DESCRIPTION OF CORNER Section Corner 4, 5, 32, and 33

CORNER MONUMENT 1" I.D. x 36" iron pipe with 4" aluminum cap

DATE MONUMENT PLACED AND WITNESSED October 10, 1968

WITNESSES TO CORNER..... Sugar Maple 10 N29°W 21½ lks. "S32 NBT"



Red Maple 6 S20°W 32½ lks. "S 5 NBT"

Sugar Maple 8 N89°E 18½ lks. "S33 NBT"

AND

CIRCLE CORNER REGISTERED

DESCRIPTION IN DETAIL AS TO HOW CORNER WAS LOCATED AND IDENTIFIED OR RESTORED.

Corner replaced from rotted stumps of two White Pines which correspond in relative and absolute size, species, bearing, and distance with two White Pine BT's mentioned in original field notes. Distances North to edge of open, grassy marsh and to foot of hill to east check closely with distances in original notes. Found a 2" squared picket at the corner position and a Celotex Corp. location poster facing it, indicating previous use of the corner location. No evidence of two spruce BT's.

The Sugar Maple 8 N89°E 18½ lks. marked on October 10, 1968 for an NBT has since been cut down above the witness blaze.

SURVEYOR'S SEAL

SIGNED Arthur O. Enger DATE 2/14/69
REGISTERED LAND SURVEYOR