

STATE OF MICHIGAN
DEPARTMENT
OF
NATURAL RESOURCES
LAND CORNER RECORD

Iron COUNTY

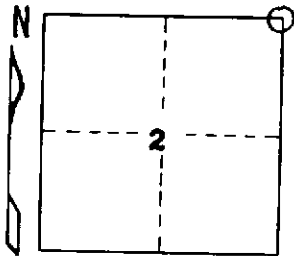
T 45-46N R 31W

DESCRIPTION OF CORNER Section Corner 1, 2, 35, and 36

CORNER MONUMENT 1" I.D. x 36" iron pipe with 4" aluminum cap

DATE MONUMENT PLACED AND WITNESSED May 29, 1969

WITNESSES TO CORNER..... B. Spruce 8 N50°W 17½ lks. "S35, NBT"



B. Spruce 12 N70°E 20½ lks. "S36, NBT"

Red Maple 5 S52°E 24½ lks. "S1, NBT"

AND

W. Pine 5 S4°W 50½ lks. "S2, NBT"

CIRCLE CORNER REGISTERED

DESCRIPTION IN DETAIL AS TO HOW CORNER WAS LOCATED AND IDENTIFIED OR RESTORED.

Monument placed at site of an old squared pine post and mound of rocks. Post rotted off at ground level and lying on ground, appears to have been burned after placement, indicating it as having been placed in 1930's or earlier. (Ring count on typical nearby larger aspens and spruces is 42-46 years.) Balsam cruisers' tree with several names and dates (oldest not legible) bears N9°W 10½ links. Ring count indicates first blaze made about 1949. Corner lies 7.00 chains south of swamp to north, 0.69 chain north of ridge top to south, 0.88 chains west of ridge top to east, 3.78 chains east of ridge top to west, and 5.60 chains east of swamp edge to west. There seems no way to locate the corner position exactly to fit all these features as recorded in original field notes, but distance to known corners to west checks very well.

SURVEYOR'S SEAL

DISTRIBUTION:

SIGNED

Arthur O. Enger
REGISTERED LAND SURVEYOR

DATE

1/28/71

County Courthouse
Area Forester (Regions I & II)
District or Region Surveyor
Forestry Div., Lansing

R 4047
Rev. 10/68